

Today is The First
Day



of The Rest of
Your Life

ECHO of "72"

1972 ECHO

Editor: Alfredia Cohen

Copy Editor: Carolyn Cox

*Advertising,
Sales and*

Division Pages: Sharon Vohsen

Advisors: Mrs. Francis Johnson

Mrs. Carolyn Kimmel

Wright City High School

Wright City, Missouri



Dedication

ELLOUISE HASEKAMP: We the 1972 yearbook staff would like to dedicate the 1972 Echo to Mrs. Ellouise Hasekamp for her 42 years of loyal service as a teacher in Missouri schools. Mrs. Hasekamp has been with the Wright City School District for 24 years, during which time she served as principal of the Wright City Elementary School for 18 years.



Administration



Donald Jones

Upon completing his Bachelor of Science degree in Physical Education at the University of Missouri, Columbia, Missouri, Mr. Jones earned his master of Arts degree in Secondary School Administration. His first employment was coaching for two years at Kingsville, Missouri, where he was coach for four years and principal the next four years. Presently he is at Wright City and has been the principal and Drivers Training instructor for the past three years.



Iris J. Schaper

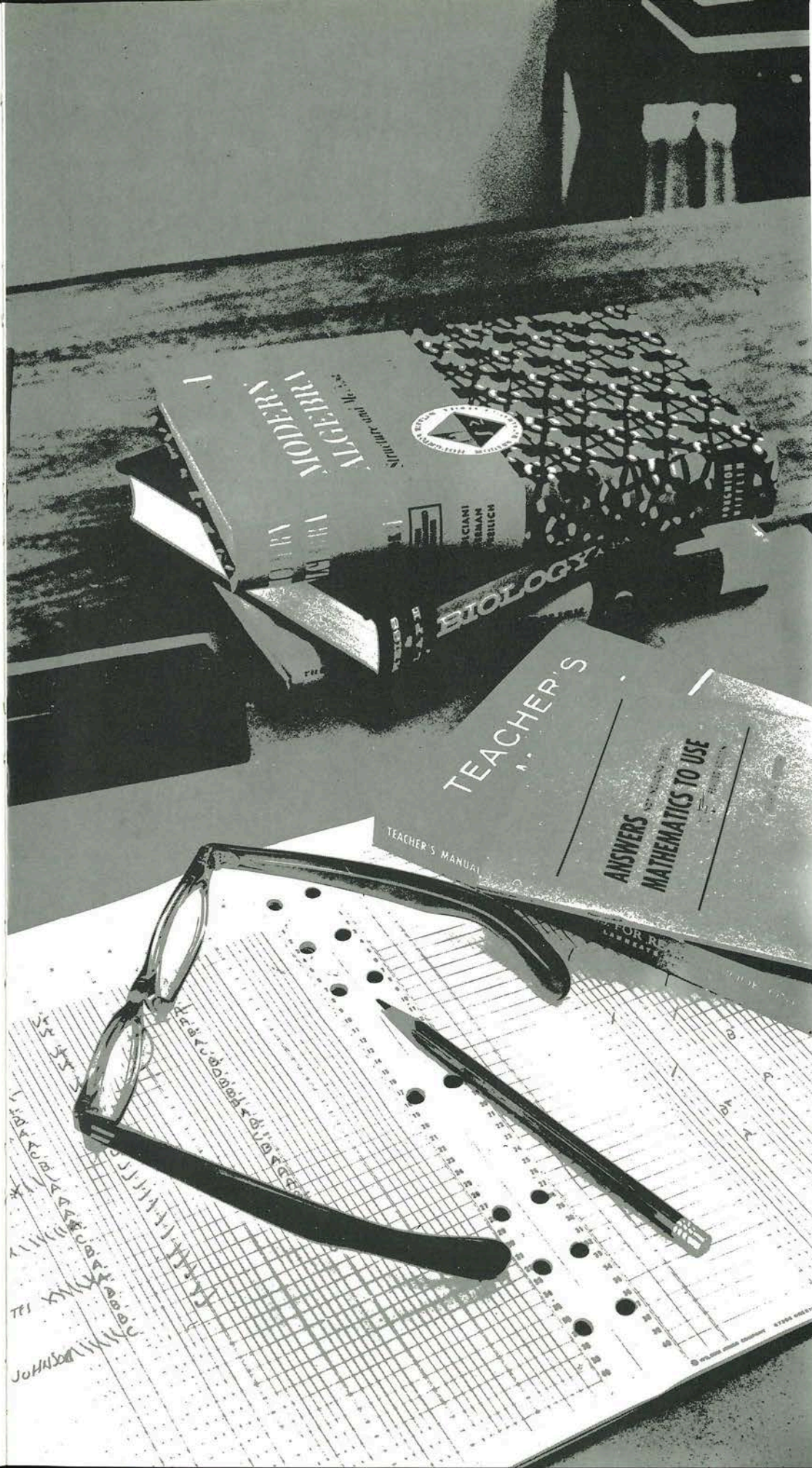
Miss Schaper graduated from Wright City High and later returned as Secretary of the school and School Board for twenty years.

Fraser C. Small

Mr. Small attended Northeast Missouri State College at Kirksville earning a Bachelor of Science degree in History and Political Science. After earning a Master of Arts degree in Secondary School Administration, he was a Superintendent and teacher at Frankford, Missouri, for one year. Mr. Small then became superintendent of Wright City Schools and has been here for twenty years.



FACULTY





GERALD ARANA,
Instrumental Music,
B.A. in Music Edu-
cation, University
of Missouri,
Columbia.



REBECCA BUCKLER,
Vocal Music, B. S.
in Education, Uni-
versity of Missouri,
Columbia.



DAN CHARLTON,
Business Education,
B. S. in Education,
Murray State Uni-
versity, Kentucky.



FRANCIS FRAZIER,
Social Studies, B. S.
in Education, North-
east Oklahoma
State, Tahlequah,
Oklahoma.



SHIRLEY GODT,
Science, B. S. in
Education, Univer-
sity of Missouri,
Columbia.



ELLOUISE HASE-
KAMP, Jr. High
English, Social Stu-
dies, B. S. in
Education, Univer-
sity of Missouri,
Columbia.



GEORGIA HOFF,
Math, B. S. in Edu-
cation, Southwest
Missouri State Col-
lege, Springfield.



FRANCES JOHNSON,
B. S. in Education,
University of Miss-
ouri, St. Louis.



JANICE KLEMME,
Vocational Home
Economics, B. S. in
Education, South-
west Missouri State
College, Springfield.



RICKARD KOELLING,
English, German,
B.S. in Education,
University of Miss-
ouri, St. Louis.



MICHELLE MILSTER,
English, Speech, B.
A. in Education,
Missouri Valley
College.

LESLIE MORRIS, In-
dustrial Arts, B. S.
in Education, North-
east Missouri State
College, Kirksville.

PICTURE
NOT
AVAILABLE



RAY RIDDER, Vo-
cational Agriculture,
B.S. in Agriculture
Education, Univer-
sity of Missouri,
Columbia.



GEORGE RITCHIE,
Physical Education,
Coach, Junior High
Social Studies, B.S.
in Education, Cul-
ver-Stockton
College.

ELVIS UTLEY, Math-
ematics, M.A.
degree in Mathema-
tics, Murray State
University,
Kentucky.



GARY WALLER,
Biology, Jr. High
Science, Physical
Education, Ass't
Coach, B.S. in Ed-
ucation, University
of Missouri,
Columbia.



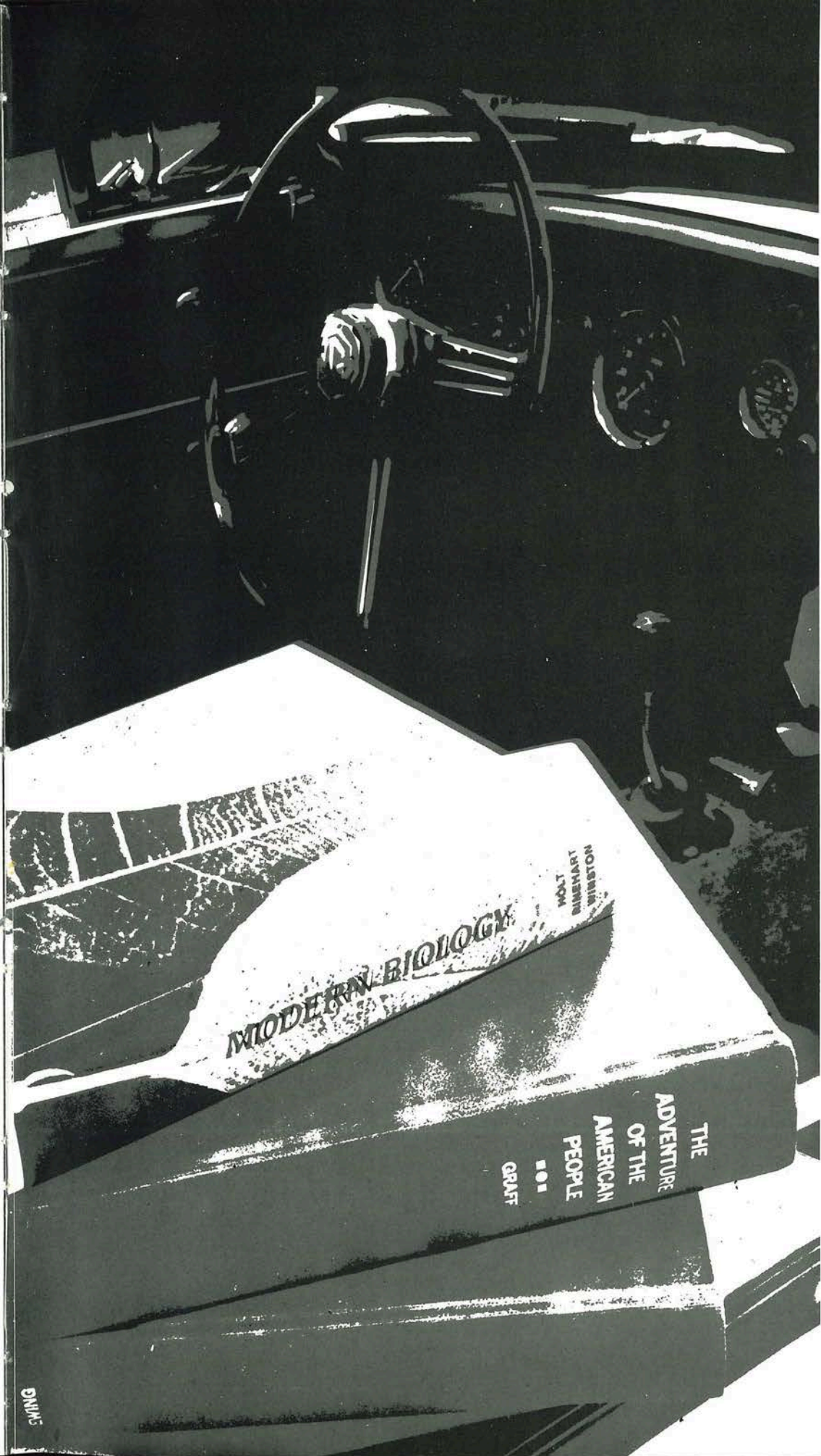
SUSAN WOLTMANN,
Student Counselor,
Psychology, Missouri
Valley B.S. Psycho-
logy, M. Ed.
Counseling, Univer-
sity of Missouri,
Columbia.

PAULA ZELLER,
Girls Physical Educa-
tion, 7th Grade
Science, B.S. in
Education, Central
Missouri State Col-
lege, Warrensburg.





SENIORS



Mike Gordon



Neilbert

Karen



Tony



Angela

Gordon



Ring-a-ding

Linda



Bright-eyes



Butch



I don't wanna



Duck

Dale Martin



Lin

Dale & David



Dimples & Moles

Nancy



I forgot

Stud



Shorty



Snoozy

Joe Ann

Benny



Gentle Ben

Temper-Temper!



Caroline



Dumb Rummy

Denny

Vicky



Vic



Old Smokey



Gerdy



Frances Derocet



Alfreda Cohen

Fred



Rev.



D. & J.



Edith Ann

Sharon

Hey Mom Hey Dad



Bell-Baby



Greg Smith



Skipper

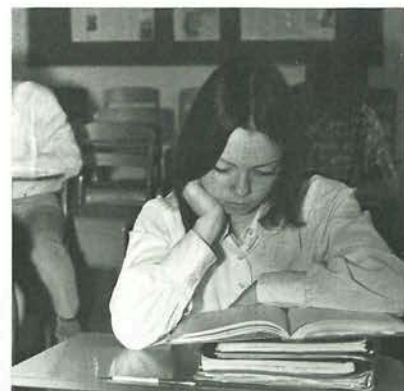
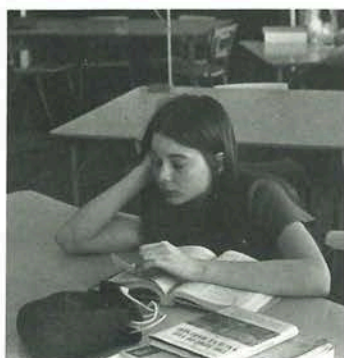


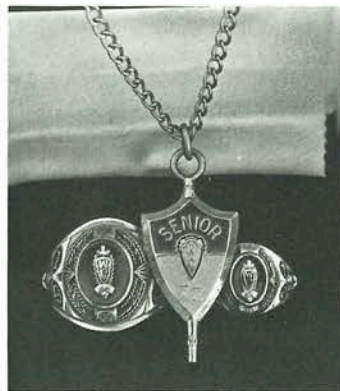
Bird legs

Brian + Bradley

Cub power





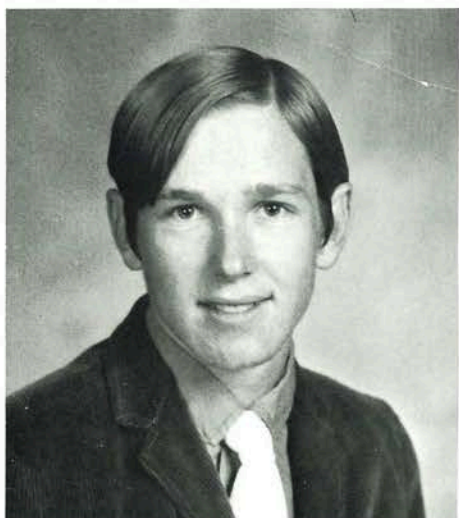




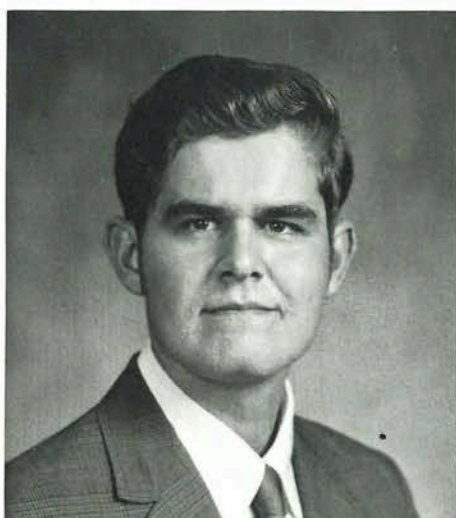
JILL BACKEUS: German Club 3; Glee Club 1, 2, 3; Pep Club 1, 4; FHA 1, 2.



JULIA BALL: Drama Club 3; Glee Club 1, 2, 3; Pep Club 1; Volleyball 1, 2, 4; FHA 1, 2, 3, 4; officer 3, 4; Drill Team 4; Newspaper staff 3, 4; Editor 4; Yearbook Staff 4.



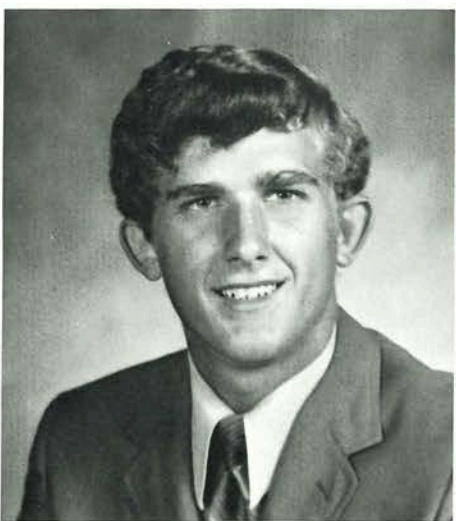
GARY BRUNING: Baseball 2; Glee Club 3, 4; Newspaper Staff 4; Yearbook Staff 4. Transferred from Marina, California.



BILL CADY: FFA 2, 3, 4.



ALFREDIA COHEN: Vice-President 4; Drama Club 3; officer 3; Glee Club 1, 2; Track 1, 2, 3; Pep Club 1, 2; officer 2; Volleyball 1, 2, 3; FHA 1; Drill Team 1, 2; Cheerleader 3, 4; captain 4; Newspaper Staff 4; Yearbook Staff 4; editor 4; Homecoming Queen Candidate 1, 2, 3; Echo Queen Candidate 4; Queen 4.



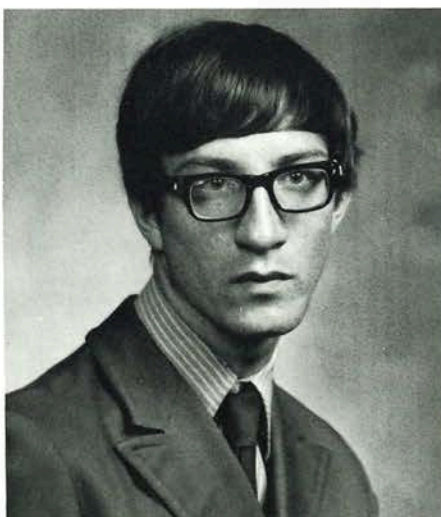
JAMES COPLING: Treasurer 4; Baseball 3; German Club 3; Glee Club 1, 2; Timekeeper 4.



CAROLYN COX: Glee Club 1, 2; Pep Club 1; FHA 1, 2; Newspaper Staff 3, 4; Yearbook Staff 3, 4; editor 4.



FRANCES DEROSSET: German Club 3; Science Club 3; Glee Club 1, 2; Pep Club 1; FHA 1, 2, 3, 4.

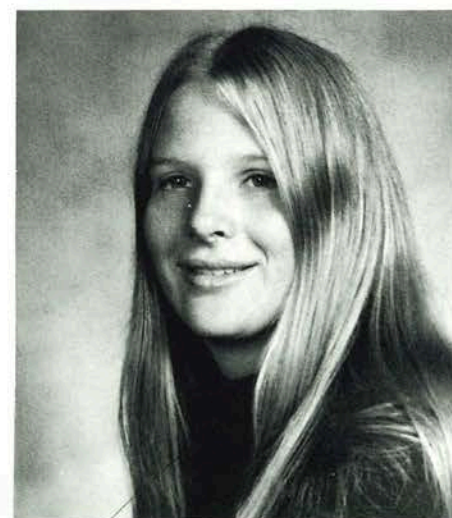


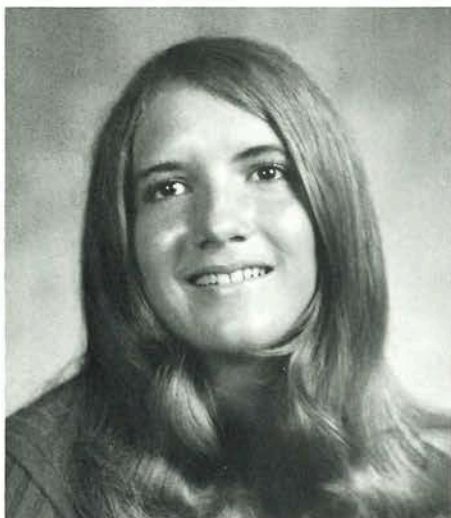
JACK DIXON: Band 1; Baseball 1, 2; Drama Club 3; German Club 3; Science Club 1, 2; Track 1; FFA 1, 2.

KATHY GERDEMAN: Science Club 2; Glee Club 1, 2; FHA 1, 2; Cheerleader 1, 2; Newspaper Staff 4; Yearbook Staff 4.

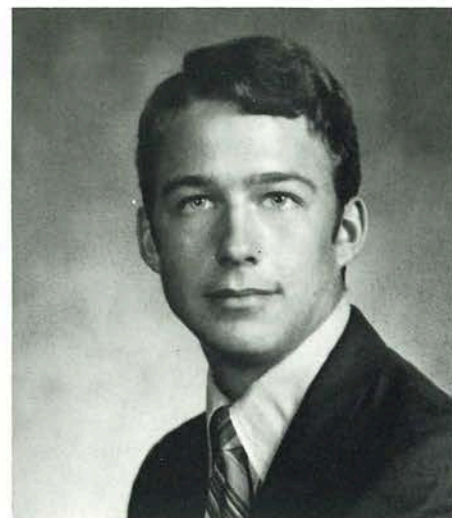


DIANE GROEPER: Vice-President 2; Secretary 1; Band 1, 2, 3, 4; officer 2, 3, 4; Select Choir 2, 3, 4; Drama Club 3; officer 3; German Club 3; Science Club 3; officer 3; Glee Club 1, 2, 3; Pep Club 1; FHA 1, 2, 3, 4; officer 2, 3, 4; National Honor Society 3, 4; Drill Team 3; Cheerleader 2, 4; Pep Band 1, 2, 3, 4; Stage Band 4; Newspaper Staff 4; editor 4; Barnwarming Queen Candidate 1, 3.





ARDELL HELD: Drama Club 3; German Club 3; Science Club 3; Glee Club 1,2; Volleyball 1,2; FHA 1,2,3,4; officer 4; Crafts Club 3; Newspaper 4; Yearbook Staff 4; Co-Editor, Homecoming Queen Candidate 4; FHA Queen 3.

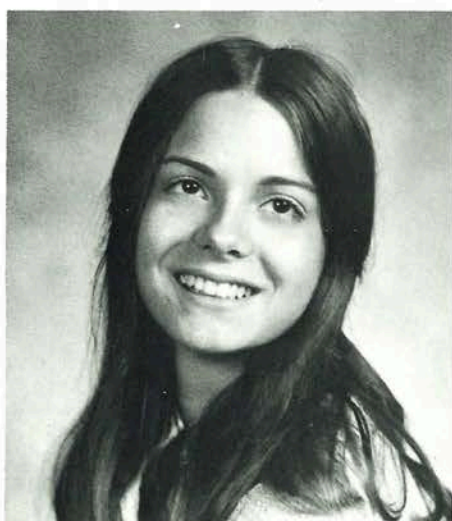


MIKE HERNDON: Band 1,2,3,4, officer 4; Student Council 4; Select Choir 4; Drama Club 3; German Club 3; Science Club 3; Glee Club 1,2; Pep Band 4; Stage Band 3,4; Newspaper Staff 3; Yearbook Staff 3;

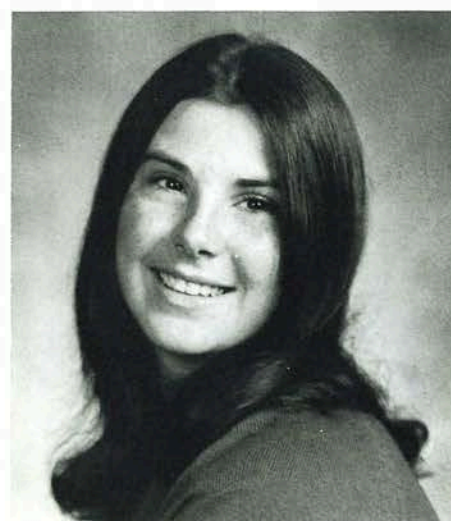


ROGER HELD: Secretary 3; Band 1,2,3; Basketball 1,2,3,4; Student Council 3,4; Select Choir 2,3,4; German Club 3; Science Club 3; Letterman's Club 3,4; Glee Club 1,2; Track 3,4; Volleyball 1,2; FFA 1,2,3,4; officer 3; Pep Band 1,2; Stage Band 1,2; Yearbook Staff 2.

VICKIE HOLLADAY: Glee Club 1,2,3; Pep Club 1; FHA 1,2; National Honor Society 3,4;



JANA KAUBLE: President 1; Band 1; Student Council 1,3; Select Choir 3,4; Drama Club 3; German Club 3; Science Club 3; Glee Club 1,2; Track 1,2,3; Volleyball 1,2,4; FHA 1,2,3,4; officer 3; National Honor Society 3,4; Cheerleader 1,2,3; Co-Captain 3; Pep Band 1; Crafts Club 3, Newspaper Staff 3; Co-Captain 3; Pep Band 1; Crafts Club 3, Newspaper Staff 3; Co-Captain 3; Pep Band 1; Crafts Club 3, Newspaper Staff 3; Homecoming Queen Candidate 3; Barnwarming Queen Candidate 1;



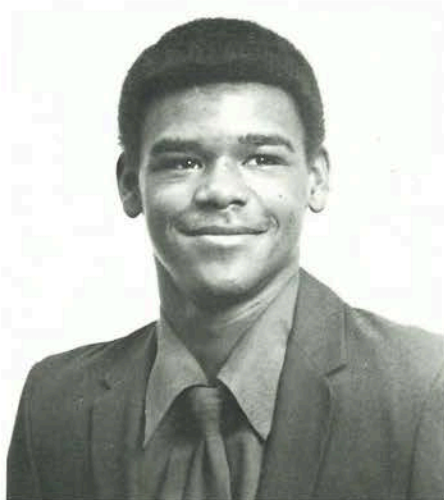


LAVERNE KORTE: German Club 3; Glee Club 1, 2, 3; Pep Club 1, 2, 4; FHA 1, 2.

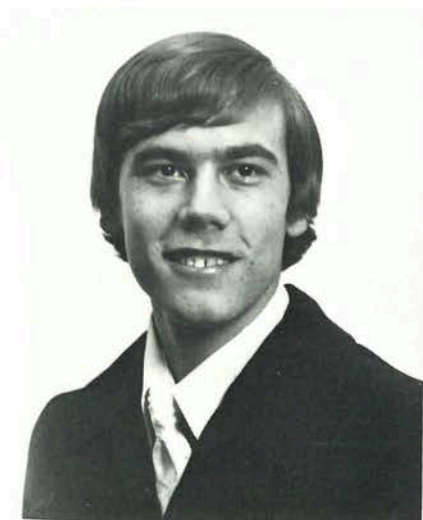


Secretary 3;
ball 1, 2,
il 3, 4;
; Ger-
ce Club 3;
, 4; Glee
4; Volley-
3, 4;
1, 2; Stage
k Staff 2.

DALE MARTIN: Treasurer 2;
Band 1, 2; Basketball 1, 2, 3, 4;
Captain 1; Co-Captain 3, 4;
Baseball 1, 2, 3, 4; Captain 4;
Co-Captain 3; Select Choir
1, 2, 3, 4; Drama Club 3;
German Club 3; Science Club
3; Letterman's Club 3, 4; of-
ficer 4; Glee Club 1, 2;
Track 1, 2, 3, 4; Volleyball
1, 2; FFA 1, 2, 3, 4; officer 3,
4; Pep Band 1, 2, 3, 4; Stage
Band 2, 3, 4; Echo King
Candidate 4.



NANCY LOGAN: Secretary 4;
Select Choir 3; German Club
3; Glee Club 1, 3; Pep Club
1, 2, 3; officer 3; Volleyball
1; FHA 1, 2, 3; National Ho-
nor Society 3, 4; Newspaper
Staff 2; Yearbook Staff 2.



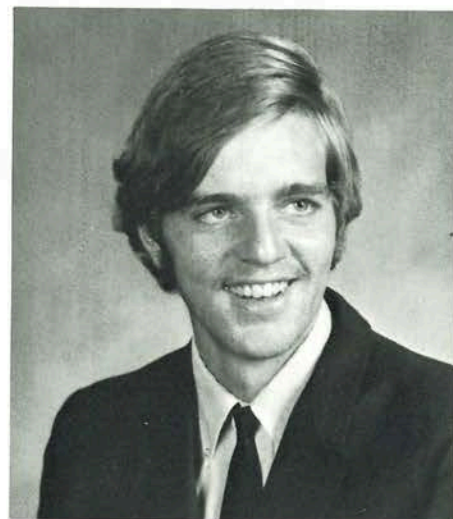
NATHAN LUCKETT: Basket-
ball 1, 2, 3, 4; Drama Club 1,
2; Volleyball 2; FFA 1, 2, 3,
4.

MARY ANN MARTIN: Glee
Club 1, 2, 3; FHA 1, 2; Barn-
warming Queen Candidate 2.



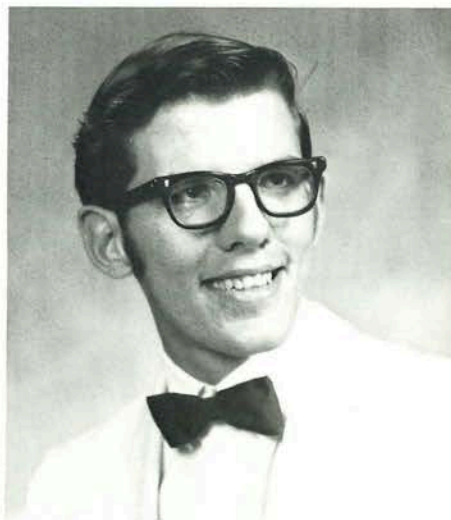


MARY LYNN MARTIN:
Science Club 2; Glee Club
1, 2; Pep Club 4; FHA 1, 2,
3, 4; Newspaper Staff 2.



TIM MURPHY: Drama Club
3; Science Club 3; Glee Club
1, 2, 3; Track 2; Newspaper
Staff 4; Yearbook Staff 4.

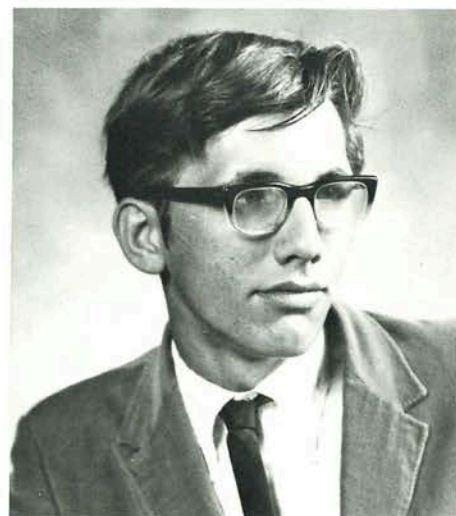
BRADLEY NORTH: Basket-
ball 1, 2, 3, 4; captain 4;
Baseball 1, 2, 3; captain 2;
Student Council 4; president
4; Drama Club 3; German
Club 3, 4; officer 3; Science
Club 3; officer 3; Letter-
man's Club 3, 4; officer 3, 4;
Glee Club 1; Track 1, 2, 3, 4;
Volleyball 1, 2; National
Honor Society 3, 4; officer 3,
4; Newspaper Staff 2; Echo
King Candidate 4; King 4.



BRIAN NORTH: Vice-Presi-
dent 4; Treasurer 1;
Basketball 1, 2, 3, 4; co-cap-
tain 2; German Club 3; Let
Letterman's Club 3; Glee
Club 1, 2; Track 1, 2; Volley-
ball 1, 2.

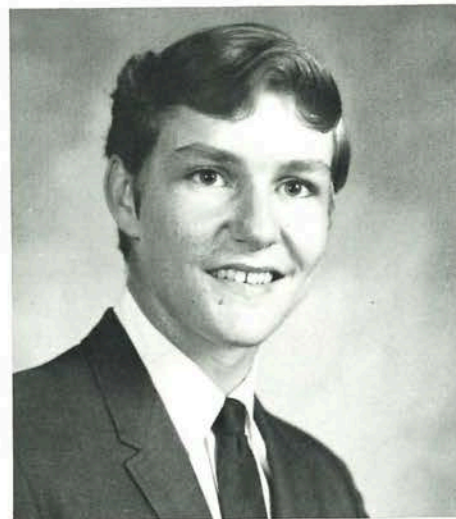


MARTIN PALMER: Glee Club
1, 2; FFA 1, 2, 3, 4.





DALE PERKINS: Class President 3; Basketball 1, 2, 3, 4; Band 1; Baseball 1, 2, 3, 4; Student Council 1, 2, 3; Select Choir 3; Drama Club 3; German Club 3; Science C Club 3; Letterman's Club 3, 4; Glee Club 1, 2; Track 1, 2, 3, 4; Volleyball 1, 2; FFA 1, 2; officer 2; National Honor Society 3, 4; officer 4.



DAVID PERKINS: President 1, 3, 4; Vice-President 2; Basketball 1, 2, 3, 4; captain 2; Baseball 1, 2, 3, 4; Track 1, 2, 3, 4; Volleyball 1, 2; FFA 1, 2; officer; Glee Club 1, 2; German Club 3; Science Club 3; Letterman's Club 2, 3, 4; National Honor Society 3, 4; Student Council 1, 3, 4; vice-president 3.

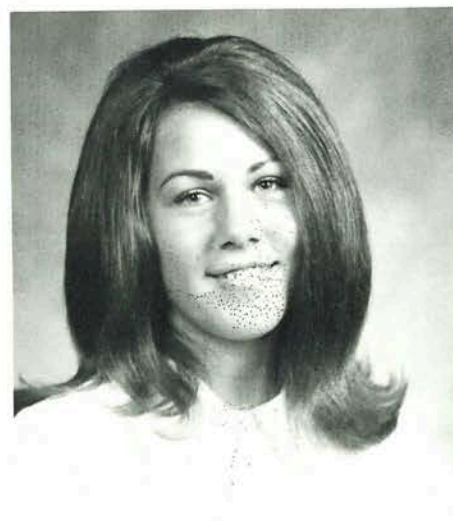
GORDON RING: Band 1, 2, 3, 4; vice-president 1, 2; Basketball 1, 2, 3, 4; Student Council 1, 3; Baseball 1, 2, 3, 4; Select Choir 2, 3, 4; Drama Club 3; German Club 3; Letterman's Club 3, 4; Glee Club 1, 2; Track 1, 2, 3, 4; Volleyball 1, 2; National Honor Society 3, 4; Pep Band 1, 2, 3, 4.



LINDA PETTY: Select Choir 4; Drama Club 3; Glee Club 1, 2, 3, 4; Track 1, 2; FHA 1.

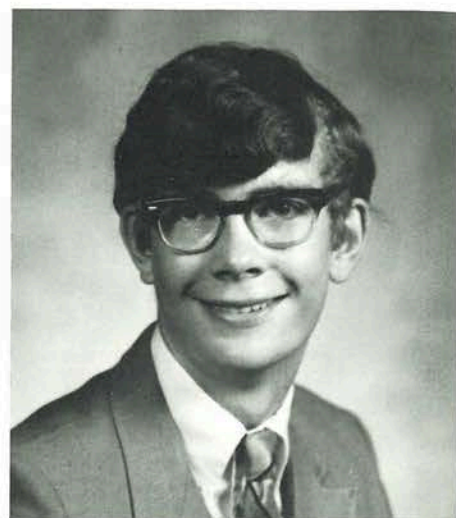


BERNICE ROSE: German Club 3; Science Club 3; Glee Club 2; FHA 1, 2, 3, 4.



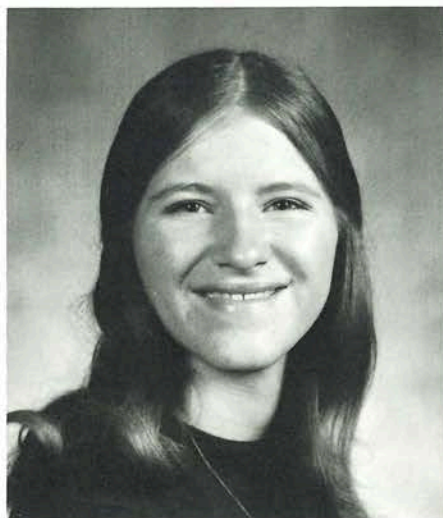


LEANNE SCHAPER: Select Choir 3; Drama Club 3; German Club 3; Science Club 3; Glee Club 1, 2; Track 1, 2; Pep Club 1; FHA 1, 2, 3, 4; officer 4.

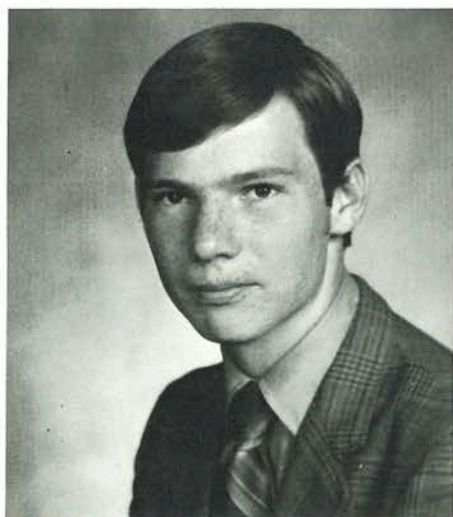


RICKY SCHRECKENGAST: Student Council 3; German Club 3; Science Club 3; Letterman's Club 3, 4; Glee Club 1, 2; Pep Club 2, 3.

KAREN SCHRIENER: Secretary 3; Drama Club 3; German Club 2, 3; Science Club 3; Glee Club 1, 2; FHA 1, 2, 3, 4; officer 4; National Honor Society 3, 4; Scorekeeper 1, 2, 3.

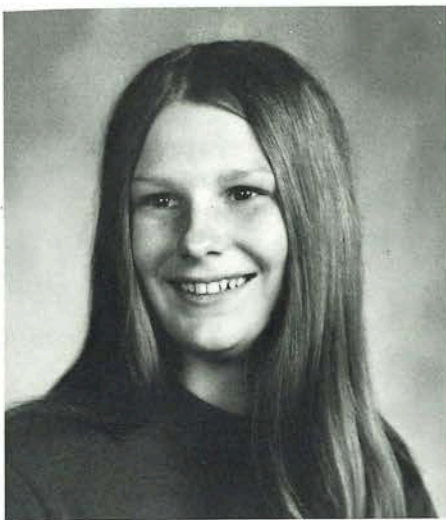


NANCY STRAUBINGER: Glee Club 1, 4; Volleyball 1, 2, 3; Timekeeper 1; Spanish Club 1, 2. Transferred from Nortre Dame, Illinois.



GREG SMITH: Basketball 1, 2, 3, 4; Baseball 1, 2, 3, 4; Student Council 4; German Club 3; Science Club 3; Letterman's Club 3, 4; Glee Club 1, 2; Track 1; Volleyball 1, 2. Transferred from Mascoutah, Illinois.





CONNIE TWIEHAUS: Drama Club 3; German Club 3; Glee Club 1, 2, 3; Pep Club 1; FHA 1; Crafts Club 3; Newspaper Staff 4; Yearbook Staff 4.



SHARON VOHSEN: Drama Club 3; German Club 3; Glee Club 1, 2; Pep Club 1, 2; FHA 1, 2; Crafts Club 3; Newspaper Staff 4; Yearbook Staff 4; Barnwarming Queen Candidate 4; Echo Queen Candidate 4.

MARK WARREN: Band 1, 2; Baseball 1, 2; Student Council 4; Drama Club 3; German Club 3; Track 1; Science Club 3; Letterman's Club 2, 3, 4; Glee Club 1, 2; Volleyball 1; FFA 1, 2, 3, 4; officer; Pep Band 1, 2; Stage Band 1, 2.

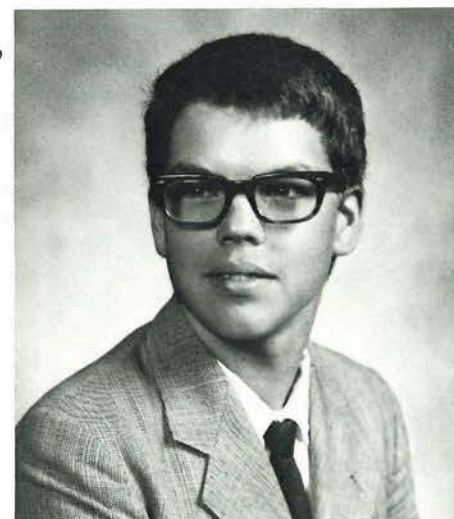


BENNY WALKER: Baseball 4; Letterman's Club 4; Science Club 3; Glee Club 3; Track 3, 4; FFA 1, 3; Crafts Club 3.



STEVE WILDING: Science Club 3; Glee Club 1, 2.

LESLIE WILLIAMS: NOT PICTURED: Pep Club 1, 2; FHA 1, 2; German Club 3; Glee Club 2; Select Choir 2.



The Matchmaker

By Thorton Wilder

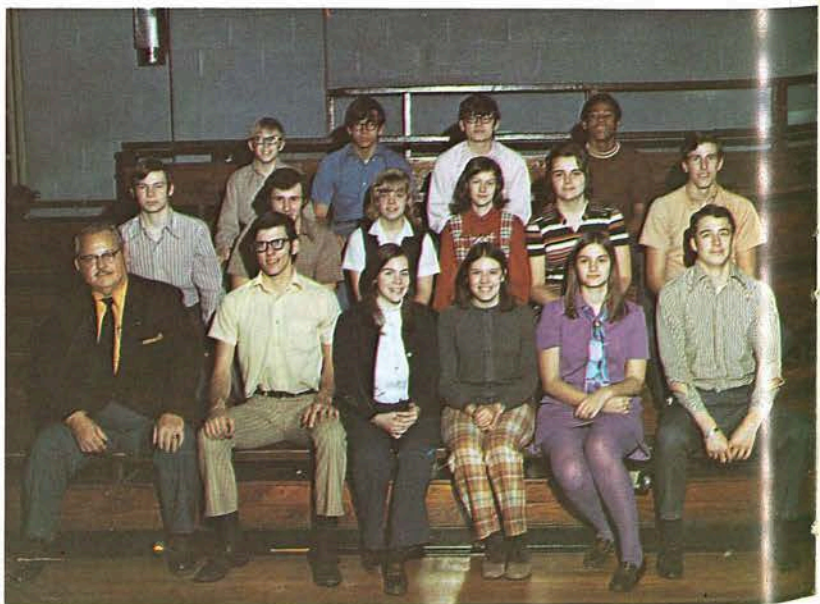
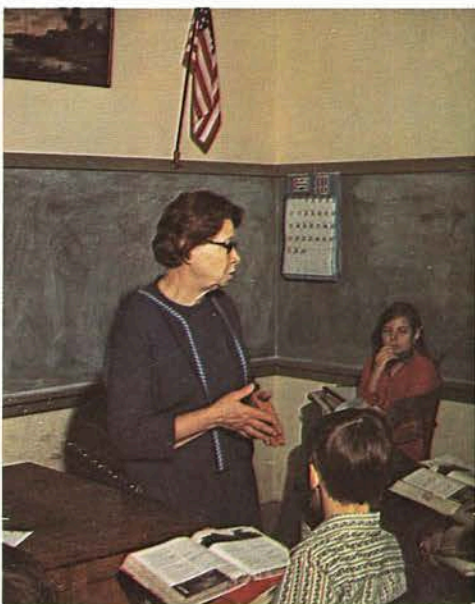


Bradley North, Dale Martin, Nancy Logan, Alfredia Cohen, Diane Groeper, Linda Petty, Gordon Ring, Jill Backes, Jana Kauble, Mike Herndon, David Perkins, Greg Smith, Dale Perkins, Jack Dixon, Gary Brandes.





Back-







CROWN BEARERS: Donna Charlton
Leslie Martin

A t t e n d a n t s



FRESHMAN ATTENDANTS: Janice Runyan
Tom Solt

SOPHOMORE ATTENDANTS: Barb Carr
Mike Booher



JUNIOR ATTENDANTS: Brenda Martin
Gary Brandes





SENIOR ATTENDANTS: Sharon Vohsen
Dale Martin



SENIOR ATTENDANTS: Alfredia Cohen
Bradley North



Music played by the
"Clique". Featuring
Randy Wright and Jerry
Arana.

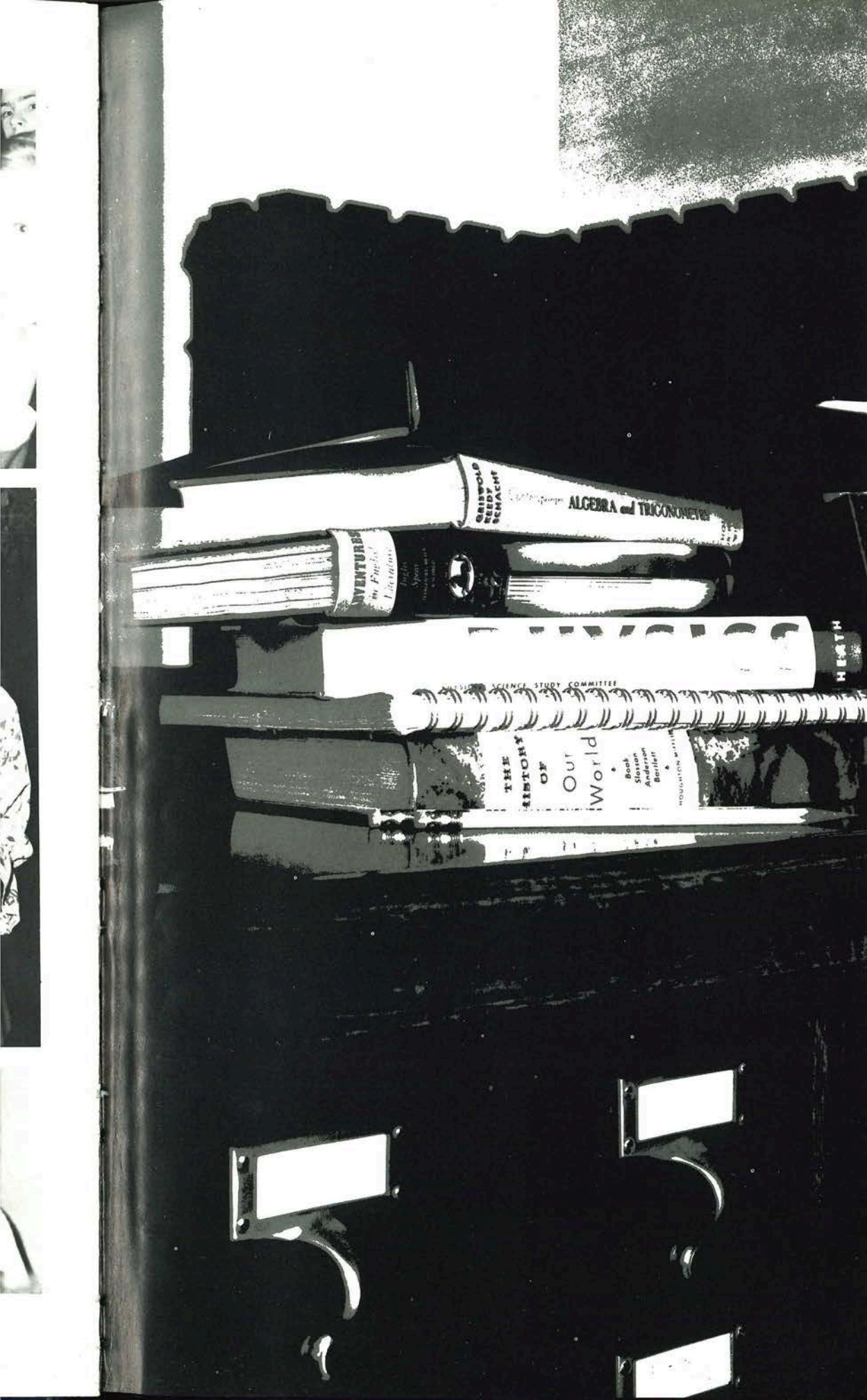






*1971-72 ECHO King And Queen
Christmas Dance Coronation*





JUNIORS

Junior Class

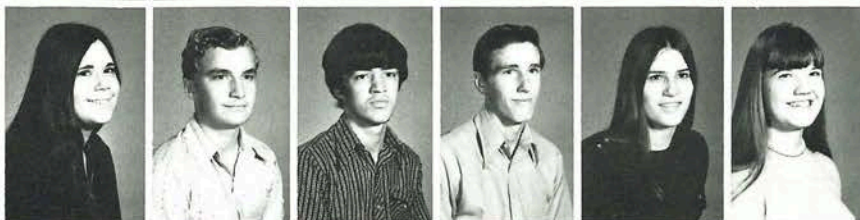


CLASS OFFICERS: President-Sherry Flesch; Vice-President-Darrell Cady; Secretary-Debbie Dixon; Treasurer-Gary Brandes; Student Council Representative-Alan Clark.

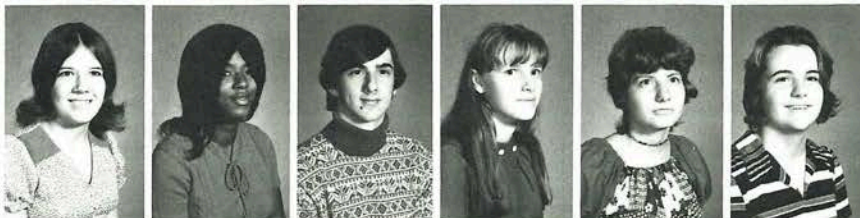
Rodney Ambrose; Beth Beeny;
Debra Beeson; Roger Blake; Ruby
Bradshaw; Gary Brandes.



Charlene Brown; Darrell Cady;
Alan Clark; Don Copling; Debra
Dixon; Debbie Dotson.



Sherry Flesch; Harriette France;
Jeff Haley; Sharon Hoeft; Lee Hol-
laday; Marie Hollenbeck.



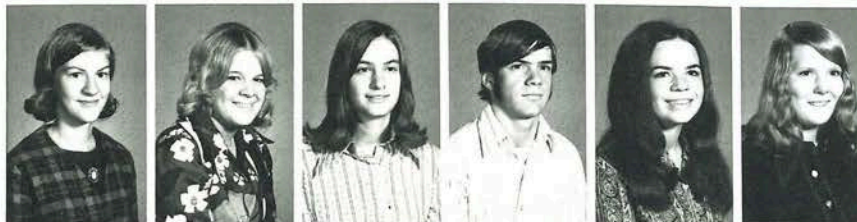
Janie Hutchison; Charles Kallbrier;
Karen Lashley; Dale Lawson; Jim
Martin; Brenda Martin.



Brenda Martin, Dennis McKinney,
Alice Mozee, Fred Mueller, Hubert
Newman, Debbie Niemann.



Mailyln Paul, Shirley Petty, Joy
Rand, Terry Roberts, Elaine Rose,
Catherine Sheets.

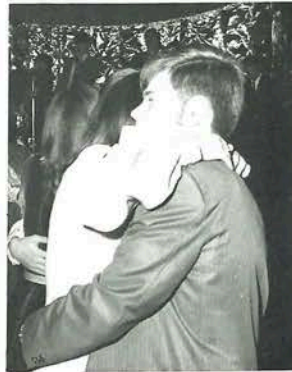


Carol Tinsley, Beverly Trantham,
David VanCleve, Larry Wehrman,
Margaret Wilding, Jeff Williams.

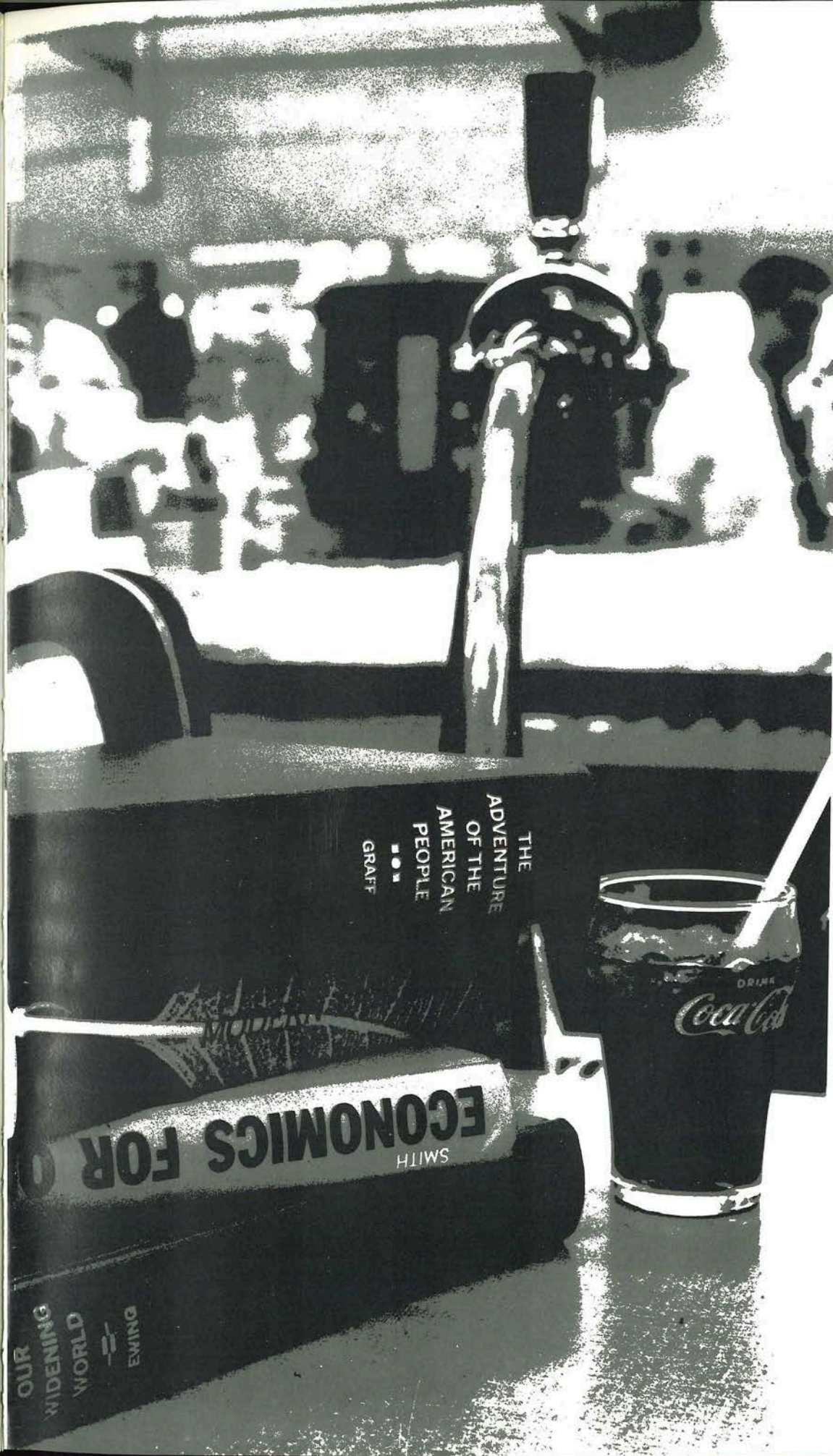


Linda Williams





SOPHOMORES



Sophomore Class



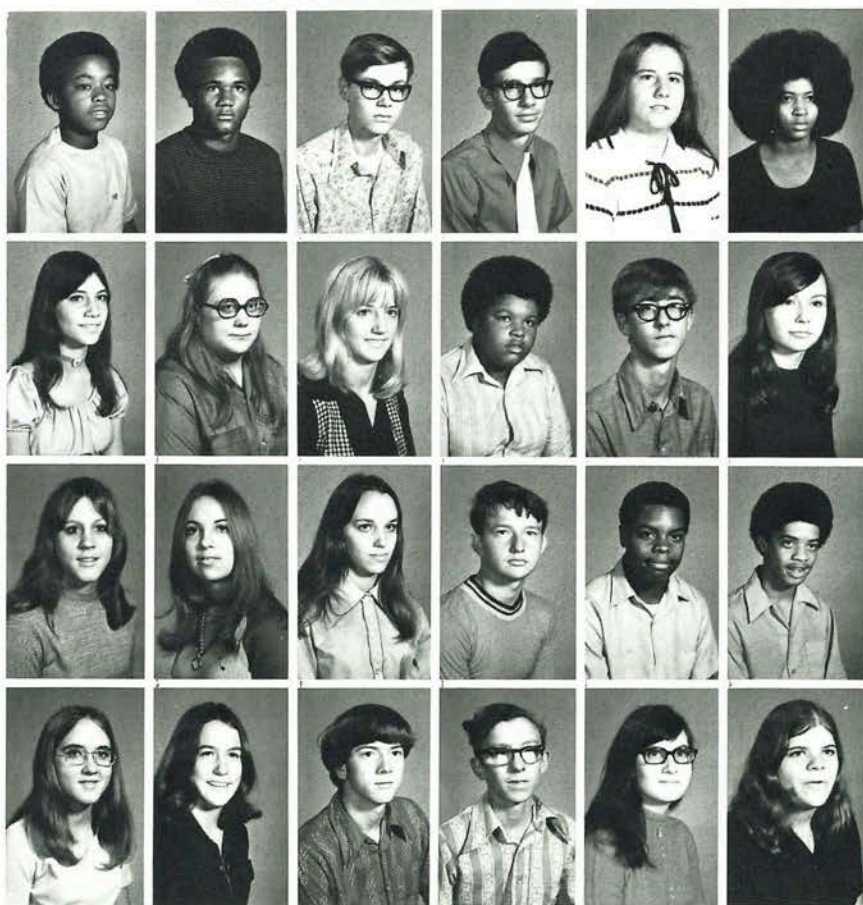
Randy Wright-President, Tyrone Wook-
folk-Vice-President, Elaine Eckhoff-
Secretary, Barb Carr-Treasurer, Debby
Eversmeyer-Reporter Jeanne Symes-
Student Council.

Ball, Homer; Ball, Julius; Bock-
horst, Dan; Booher, Mike;
Boulanger, Kathy; Bradshaw,
Diane.

Carr, Barbara; Christopher, Pat;
Cook, Lynn; Corbett, Ben; Craw-
ford, Randy; Eversmeyer, Debra.

Frye, Debbie; Groteweil, Cheryl;
Gummersheimer, Karen; Helvey,
John; Howard, Forrest; Howard,
Ronnie.

Huff, Barb; Hunziker, Cindy; Ja-
cobs, Bill; Kallbrier, Dan;
Sleinschmidt, Jean; Krause,
Bonnie.



Gary Kreuger, Linda Lawson,
Cathy Lindsey, Alice Logan,
Brenda Love, Dennis Meyer.



Mike Miller, Cathy Mound, Gary
Newman, Dianna Niemann, Gary
Perkins, Vergil Rose.



Cindy Schamma, Patty Schamma,
Ricky Schmitt, Susan Schriener,
Brad Simpson, Blair Smith.



Rosalie Stanek, David Stevenson,
Jeanne Symes, Betty Warfel, Lynn
Warren, Leon Wilding.



Tyrone Woolfolk, Randy Wright,
John Wyatt







FRESHMEN

Freshman Class



Tom Solt-President, Theresa Smith-Vice-President, Mary Lorber-Treasurer, Dennis Johnson, Student Council Representative, Tim Wilding-Reporter; Kristy Beeny (not pictured) - secretary.

Beeny, Kristy; Bote, Bruce; Bote, Jean; Bradshaw, Barbara; Cady, Clifford; Carr, Jim.



Clark, Roger; Edgerton, David; Held, Carol; Jacobs, Darrell; Jaspering, Jack; Johnson, Dennis.



Kauble, David; Lavy, Debbie; Lawson, Tommy; Leykamp, John; Logan, James; Lohmann, William.



Lorber, Mary; Mason, Ronnie; Mittler, Max; Mozee, Linda; Mueller, RuthAnn; North, Gilbert.



Ostmann, Brian; Park, Don; Pettig,
Rick; Probert, Donna; Runyan,
Janice; Schamma, Kim.



Schaper, Lorraine; Schmidt,
Darrell; Schreckengast, Harry;
Shoemaker, Robert; Skorez, Ed;
Smith, Theresa.



Solt, Tom; Stanek, Kenneth;
Strother, Debra; Sydnor, Bernard;
Sydnor, LeVan; Taylor, Nancy.



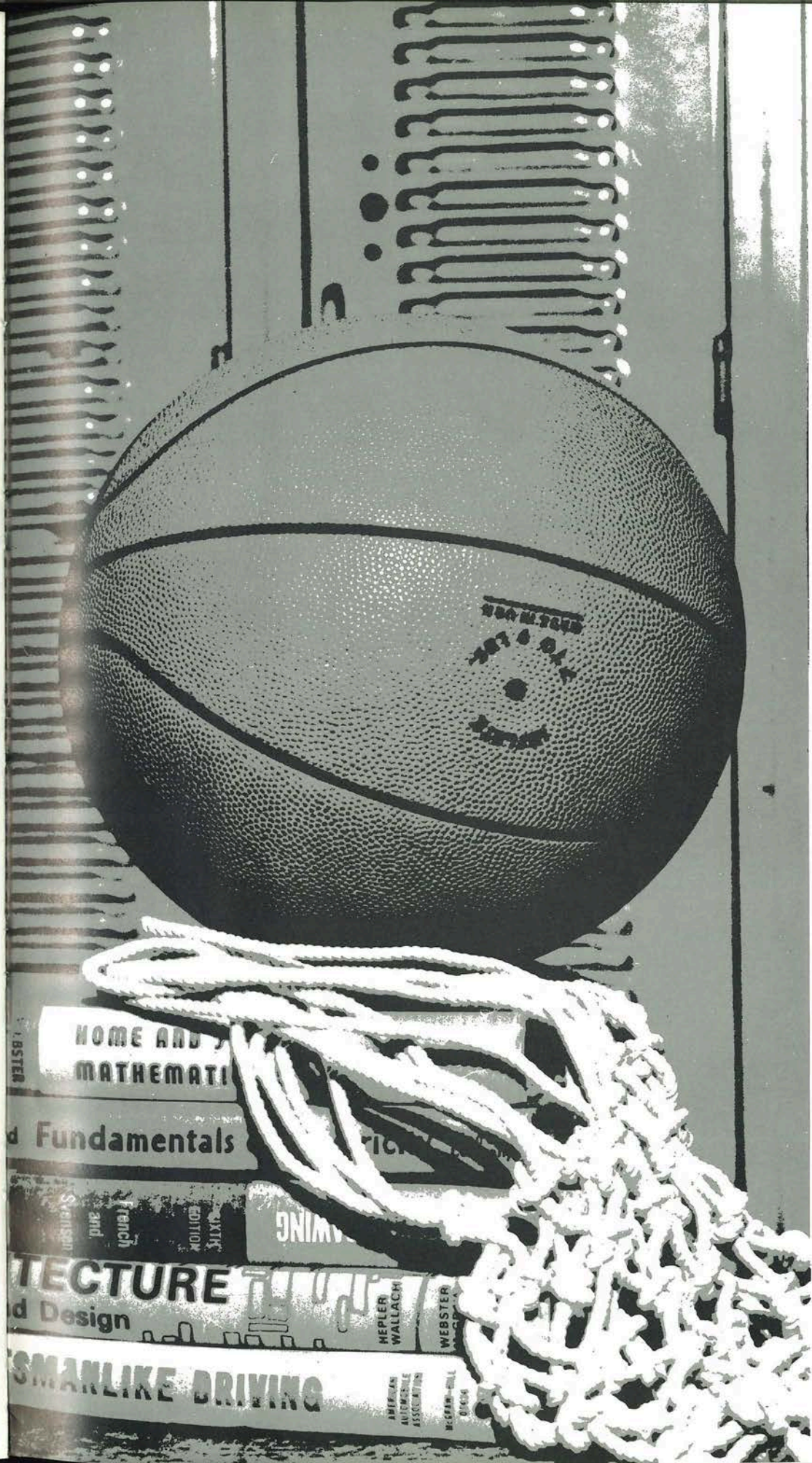
Tinsley, Karen; Tucker, Debbie;
Wallace, Wille; Wilding, Tim;
Wilmsmeyer, Marie; Wilson,
Cathy.



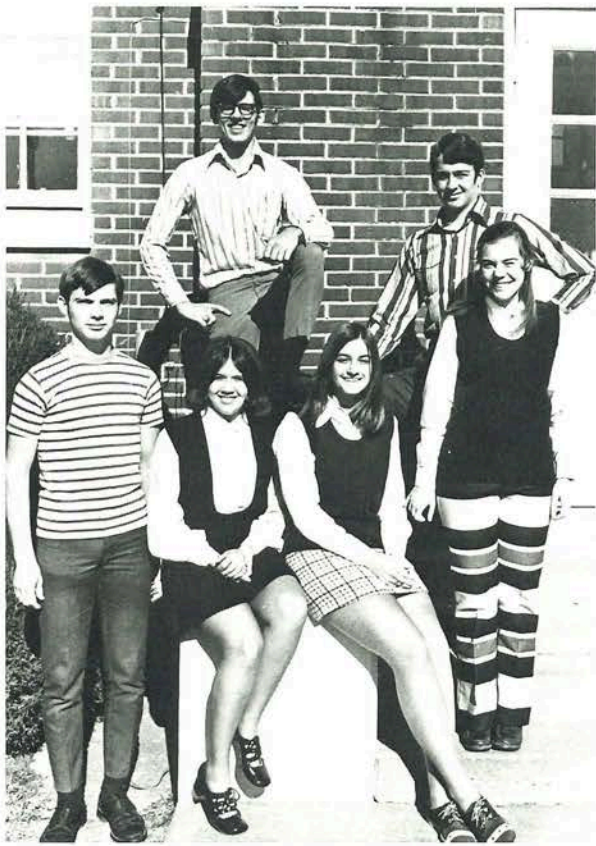
Wyatt, Gary; Wyatt, Mona; Zu-
hone, Jennette.







SCHOOL LIFE



Officers

Greg Smith, reporter; Sherry Flesch, Secretary; Joy Rand, Vice-President; Jeanne Symes, treasurer; Bradley North, President; Roger Held, parliamentarian.

ROW 1: Mr. Frazier, sponsor, Greg Smith, Roger Held, Jeanne Symes, Sherry Flesch, Roy Rand, Bradley North. ROW 2: David Perkins, Marie Hollenbeck, Mary Lou Brandes, Marilyn Paul, Mark Warren, Billy Flesch. ROW 3: Tom Solt, Mike Herndon, Dennis Johnson, Randy Wright, Allan Clark.

*S
t
u
d
e
n
t*



*C
o
u
n
c
i
l*

National Honor Society



ROW 1: Gordon Ring, Rosalie Stanek, Brad North, David Perkins, Brian North. ROW 2: Jeanne Symes, Nancy Logan, Marie Hollenbeck, Marilyn Paul, Gary Brandes, Janie Hutchison, Jean Kleinschmidt, Barb Carr, Karen Schriener, Joy Rand, LeAnne Schaper, Diane Groeper, Debbie Dixon, Sam Parks, Debbie Niemann, Sherry Flesch, Alice Mozee, Jana Kauble, Dale Perkins.

Lettermans Club



ROW 1: Mr. Ritchie, sponsor: Brad North, President; Dale Martin, Vice President; Greg Smith, Secretary-Treasurer. ROW 2: David Perkins, Dale Perkins, Brian North, Gordon Ring, Roger Held, Sam Parks. ROW 3: Mark Warren, Benny Walker, Blair Smith, Tyrone Woolfolk, Jeff Williams, Gary Brandes, Mike Frye.

*P
u
b
l
i
c
a
t
i
o
n
s*



YEARBOOK EDITORS: Alfredia Cohen, Carolyn Cox, Ardell Held, Sharon Vohsen. NEWSPAPER EDITORS: Diane Groeper, Julia Ball. PUBLICATIONS STAFF: Kathy Gerdeman, Beth Beeny, Ruby Bradshaw, Connie Twiehaus, Alice Mozee, Roger Blake, Tim Murphy, Dale Lawson, Gary Bruning. SPONSOR: Mrs. Carolyn Kimmel.

*C
l
a
s
s*

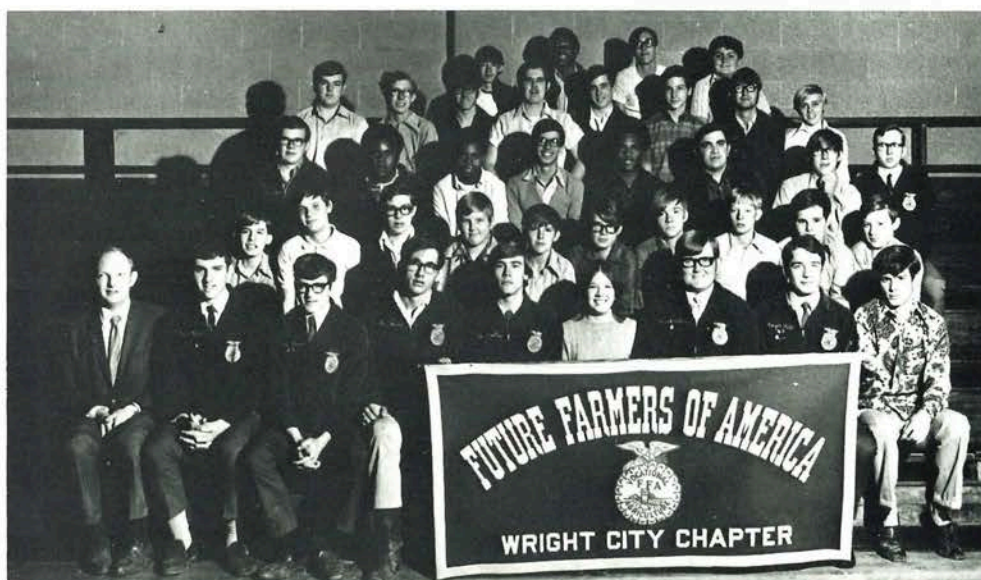


F H A



ROW 1: Janice Klemme, advisor; Elaine Rose, Karen Schriener, secretary; LeAnne Schaper, 2nd vice-president; Marilyn Paul, president; Brenda Martin, 1st vice-president; Ardell Held, treasurer; Diane Groeper, reporter; Sherry Flesch, historian.
ROW 2: Lynn Warren, Diane Niemann, Jeanne Symes, Cathy Lindsey, Maria Wilmsmeyer, Cathy Wilson, Jennette Zubohone, Janice Runyan, Rosalie Stanek.
ROW 3: Ruby Bradshaw, Mona Wyatt, Debra Strother, Jana Kauble, Charlene Brown, Margaret Wilding, Debbi Dotson, Marie Hollenbeck. ROW 4: Cindy Hunziker, Barb Huff, Lynn Cook, Fran DeRossett, Bemice Rose, Mary Lynn Martin, Theresa Smith, Katie Schaper.

ROW 1: Ray Ridder, advisor; Mike Miller, sentinel; Dennis Meyer, secretary; Martin Palmer, Dale Martin, treasurer; Sherry Flesch, barnwarming queen; Mark Warren, vice-president; Roger Held, president; Mike Frye, reporter. ROW 2: Clifford Cady, Rick Petty, David Kauble, Darrell Schmidt, Gilbert North, Tom Lawson, Brian Ostmann, William Lohmann, John Leykamp, Jackie Jaspering. ROW 3: Larry Wehrman, Tyrone Woolfolk, Forest Howard, Mike Booher, Julius Ball, Gary Kreuger, Gary Perkins, David Stevenson, historian. ROW 4: Jim Martin, Dan Kallbrier, Rick Prior, Bill Cady, Gary Newman, Vergil Rose, Rodney Ambrose, David Edgerton. ROW 5: Kenneth Stanek, Dennis Johnson, Hubert Newman, Jimmy Logan.



F F A

Band

O f f i c e r s



Diane Groeper, vice-president; Mike Herndon, student council representative; Randy Wright, president; Gordon Ring, publicity chairman; Jeanne Symes, secretary; Gary Brandes, treasurer.

ROW 1: Carol Held; Rosalie Stanek; Jeanne Symes; Marie Wilmsmeyer; Linda Garrett; Pam Woolfolk; Mary Lou Brandes; Martha Matthews; ROW II: Ruth Ann Mueller; Josephine Syndor; Sheila Wilkins; Tyrone Woolfolk; Forest Howard; Mike Herndon; Bruce Bote; Julius Ball; Debbie Nojiri; Diane Groeper; Roger Held; Brian Ostmann; Kirk Warren; ROW III: Harry Schreckengast; David Van Cleve; David Edgerton; Ed Cotton; Fred Mueller; Sam Park; Mike Booher; Dale Martin; Gary Brandes; Gordon Ring; Blair Smith; ROW IV: Sam Sims; Curtis Hoeft; Homer Ball; Randy Wright; Jerry Arana, director.



*S
t
a
g
e*



*B
a
n
d*

ROW I: Julius Ball; Bruce Bote; Tim Bohler; Forest Howard; Jeanne Symes; Mike Herndon; Tyrone Woolfolk; ROW II: David Meastes; Sam Parks; Fred Mueller; David Edgerton; Mike Booher; Dale Martin; Gary Brandes; Gordon Ring; Kirk Warren; Blair Smith; ROW III: Eric Parks; Dennis Johnson; Homer Ball; Randy Wright; Diane Groeper; Jerry Arana, director.

Martha Matthews; Elaine Eckhoff; Cindy Hunziker; Janie Sue Hutchinson; Diane Groeper; Debbie Dixon; Elaine Rose; Barb Huff; Cathy Lindsey; Lynn Warren; Katie Schaper; Brenda Love; ROW II: Susie Zuhone; Karen Gummersheimer; Shirley Petty; Pat Wallace; Donna Miller; Jana Kauble; Linda Petty; Lynn Cook; Mary Lorber; Theresa Smith; Jeanne Symes; Barb Carr; Margaret Wilding; ROW III: Ricky Schmidt; Jim Carr; Mike Herndon; Roger Blake; Gary Brandes; Max Mittler; Gordon Ring; Roger Held; Tyron Woolfolk; Sam Parks; Dale Martin; Randy Wright; Blair Smith; Jerry Arana, director.

*M
i
x
e
d*



*C
h
o
r
u
s*

October	4	PTA	7th & High School Band
November	8	PTA	7th, High School Band & Mixed Chorus
November	20	Candy Sales	7th, High School, Stage Bands & Mixed Chorus
November	24	Thanksgiving Assembly	7th, High School Band & Mixed Chorus
December	20	Christmas Concert	Stage Band & Mixed Chorus
January	18	Senior Citizens	Stage Band & Mixed Chorus
February	15	Elementary School Assembly	Stage Band
February	18	Pep Rally Assembly	Won First Place
February	19	Stage Band Contest at Montgomery City	
		Ben Corbett & Julius Ball awarded outstanding jazz soloists	
March	21	Pre Contest Concert	
March	25	Concert Permaneer Ground Breaking	Stage & Concert Bands
April	8	District Contest	Band: First Place
			Solos: 9 First Places
			Mixed Chorus: Second Place
			Solos: 7 Second Places
			Solo: Third Place
			Stage Band
April	15	Drury Stage Band Contest	
		\$250 Scholarship given to Julius Ball	
April	20	Warrenton Jazz Rock Festival	Stage Band
April	21	Wright City Elementary Band Assembly	6th Grade Band
April	29	State Contest	4 First Places
May	15	Mother & Daughter Banquet	Stage Band
May	16	Spring Concert	6th Grade, Stage & Concert Band & Elementary Chorus

*J
u
n
i
o
r*



*H
i
g
h*

ROW 1: Dana Smith, Rose Sims, Becky Carr, Joyce Held, Patsy Lindsey, Mark Cady.
ROW 2: Leslie Kauble, Timothy Bohler, Pat Woolfold, David Charlton, Hillard France,
David Alberternest, David Maestes, Mike Booher, Howard Bradshaw, Blair Smith. ROW 3:
Billy Niemann, Bobbie Gentry, Laura Manda, Mr. Arana, sponsor.

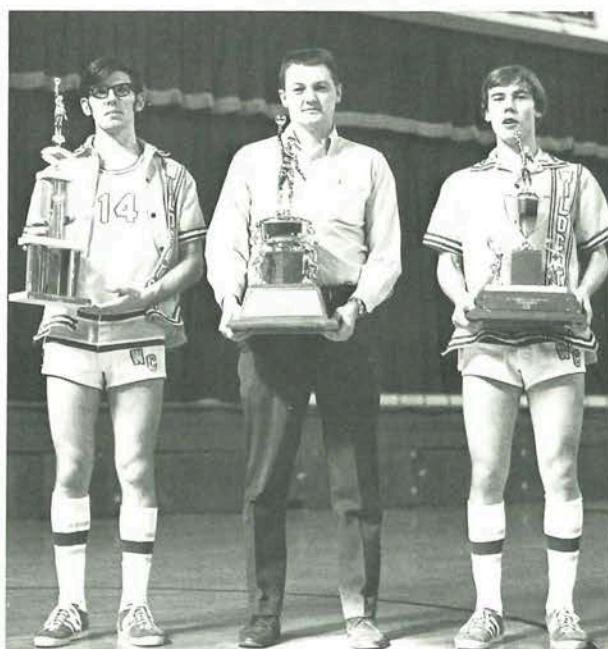
*C
h
r
i
s
t
m
a
s*



*C
o
n
c
e
r
t*



ROW I: Gary Waller, assistant coach; Bradley North, captain; Dale Martin, co-captain; George Ritchie, coach; ROW II: Greg Smith; Mike Frye; Dale Perkins; Roger Held; Donald Copling; David Perkins; Gordon Ring; Max Mittler; Brian North; Nathan Lockett; Mark Warren, manager.



Bradley North, captain; George Ritchie, coach; Dale Martin, co-captain.

W. C.	73	Silex	34
W. C.	99	Valley Park	49
W. C.	96	Orchard Farm	59
W. C.	59	Fort Zumwalt	75
W. C.	75	Winfield	53
W. C.	83	St. Dominic	104
W. C.	96	Silex	72
W. C.	67	Troy	72
W. C.	103	Valley Park	56
W. C.	58	St. Dominic	74
W. C.	91	Orchard Farm	57
W. C.	48	Wentzville	81
W. C.	79	Winfield	77
W. C.	90	Ft. Zumwalt	73
W. C.	81	Wentzville	68
W. C.	76	Francis Howell	57

WENTZVILLE TOURNEY

W. C.	87	Valley Park	60
W. C.	77	Orchard Farm	60
W. C.	78	Duchesne	84

FORT ZUMWALT TOURNEY

W. C.	91	Valley Park	59
W. C.	54	Ft. Zumwalt	66
W. C.	85	Wentzville	76
W. C.	90	Ft. Zumwalt	73

TROY TOURNEY

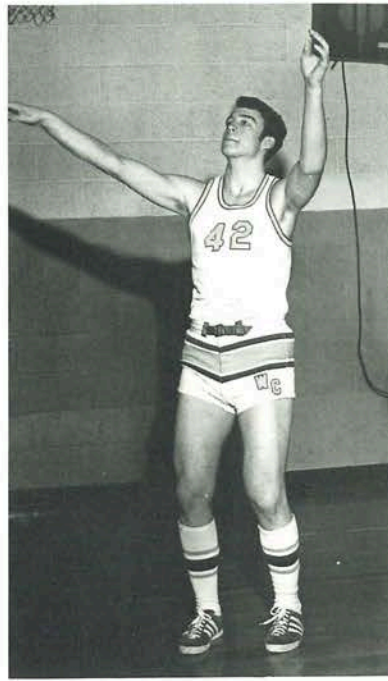
W. C.	53	St. Francis Borgia	51
W. C.	56	Troy	61
W. C.	76	Winfield	71

CLASS S REGIONAL TOURNEY

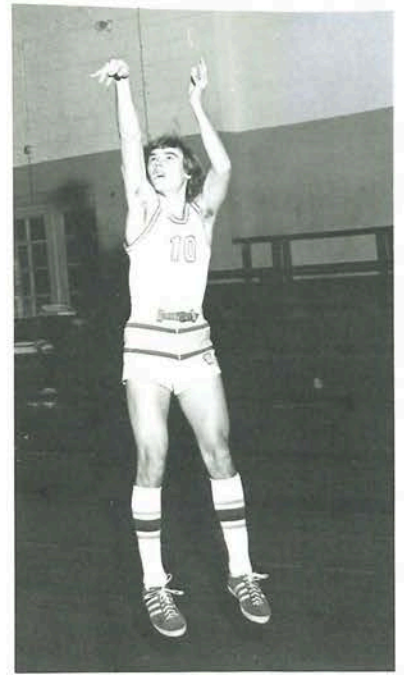
W. C.	100	New Bloomfield	43
W. C.	86	Mo. School for Deaf	59
W. C.	92	University High	74
W. C.	78	Tuscumbia	73



Brad North
Forward Avg. 10.3



Roger Held
Center Avg. 12.0



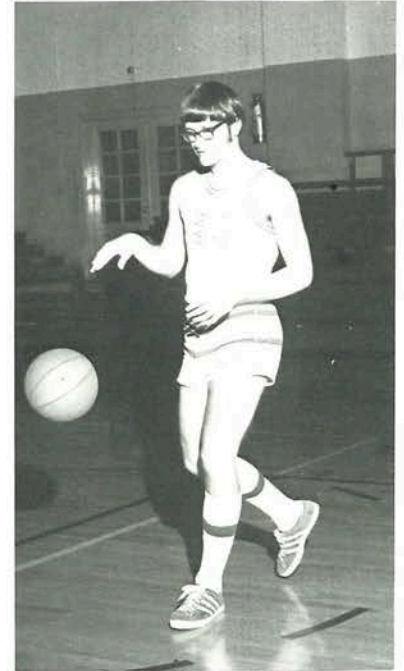
Dale Martin
Guard Avg. 19.2



Dale Perkins
Forward Avg. 5.4



David Perkins
Forward Avg. 9.9



Gordon Ring
Guard Avg. 16.0

34
49
59
75
53
104
72
72
56
74
57
81
77
73
68
57

60
60
84

59
66
76
73

51
61
71

43

59
74
73



Brian North
Forward Avg. 2.1



Donald Copling
Guard Avg. 0.7



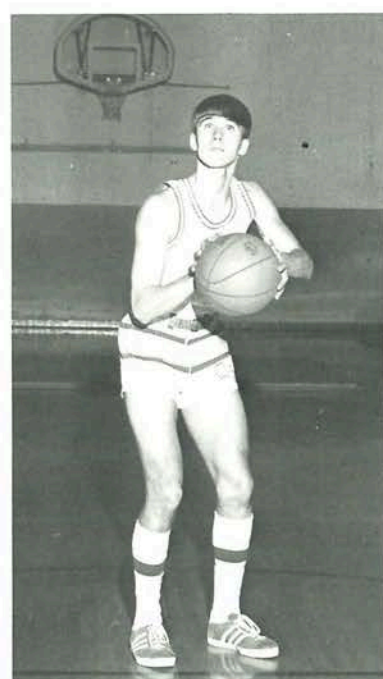
Greg Smith
Guard Avg. 0.9



Nathan Lockett
Guard Avg. 1.5



Gary Brandes
Guard Avg. 1.5



Max Mittler
Guard Avg. 6.2

J u n i o r

V a r s i t y



STANDING: Coach Waller, John Wyatt, Jim Carr, Bruce Bote, Eric Park, Sam Park, Tyrone Woolfolk, Blair Smith, Harry Schreckengast (Manager). KNEELING: Rick Schmidt (Manager), Julius Ball, Ronnie Howard, Dennis Johnson, Gilbert North.

W.C.	80	Silex	21
W.C.	66	Valley Park	34
W.C.	84	Orchard Farm	65
W.C.	64	Fort Zumwalt	62
W.C.	73	Winfield	56
W.C.	44	St. Domonic	71
W.C.	69	Silex	32
W.C.	70	Troy	66
W.C.	61	Valley Park	45
W.C.	29	McClair	52
W.C.	47	Wentzville	44
W.C.	65	Orchard Farm	55
W.C.	45	St. Domnic	70
W.C.	74	Orchard Farm	57
W.C.	51	Wentzville	41
W.C.	55	Winfield	42
W.C.	61	Fort Zumwalt	44



B a s k e t b a l l

*B
a
s
e*



*B
a
l
l*

ROW 1: David Perkins, Greg Smith, Randy Wright, Dennis Johnson, Blair Smith, Gary Brandes, Sam Parks. ROW 2: Mr. Ritchie, coach; Dale Perkins, Dale Martin, Benny Walker, Max Mittler, Roger Held, Gordon Ring, Mr. Waller, coach.

*T
r
a
c
k*



ROW 1: John Wyatt, Blair Smith, Dale Martin, Gary Brandes. ROW 2: Mr. Ritchie, coach; Dale Perkins, Roger Held, Gordon Ring, David Perkins, Sam Parks.

Cheerleaders



ROW 1: Wildcat-Janice Runyan. ROW 2: Diane Groeper, Brenda Martin, Alfredia Cohen. ROW 3: Debbie Dixon, Sherry Flesch, Elaine Rose.

ROW 1: Mary Lorber, Lynn Cook. ROW 2: Theresa Smith, Elaine Eckhoff, Susie Zuhone.



Alfredia Cohen-captain; Paula Zeller-sponsor; Elaine Rose-co-captain.



*D
r
i
l
l*



*T
e
a
m*

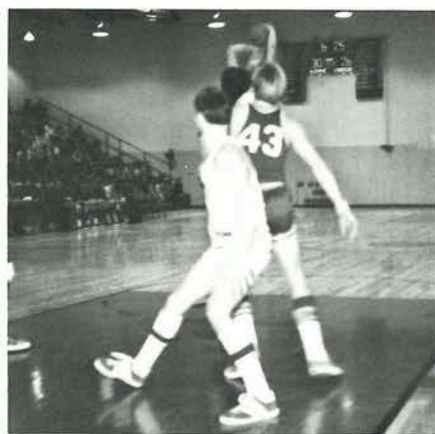
Barb Huff; Cindy Hunziker; Jeanne Symes; Janie Hutchison; Ruby Bradshaw; Debbie Strother; Linda Lawson; Pam Lehman; Julia Ball, not pictured.

Jill Backus; Mary Lynn Martin; Gary Perkins, Larry Wyatt; LaVan Sydnor, LaVerne Korte; Tom Solt, Marie Hollenbeck; Debbie Dotson; Sharon Hoeft; Diane Niemann, Bernard Sydnor; Elvis Utley, sponsor; Barb Carr; Mona Wyatt; Debbie Strother; Katie Schaper; Kathy Wilson; Paula Zeller, sponsor; Jeanne Symes; Rosalie Stanek.



*P
e
p*

*C
l
u
b*



*W
i
l
d
c
a
t
s*

*I
n*

*A
c
t
i
o
n*

School Celebrities



MOST LIKELY TO SUCCEED
Nancy Logan and David Perkins

MOST FRIENDLY
Alfredia Cohen and Brian North



MOST TALENTED
Diane Groeper, and Gordon Ring

DONE MOST FOR SCHOOL
Sherry Flesch and Bradley North



PERFECT PAIR
Elaine Rose and Dale Martin

MOST TALKATIVE
Debbie Dixon and Benny Walker





MOST POPULAR
Bradley North and Alfredia Cohen

BIGGEST FLIRTS
Debbie Dixon and Mike Booher



MOST ATHLETIC
Brenda Martin and Dale Martin



**PHYLLIS DILLER AND BOB HOPE
AWARD**
Ardell Held and Benny Walker

BEST DRESSED
Roger Blake and Sharon Vohsen



BEST DANCERS
Ronnie Howard and Alfredia Cohen



Spring Dance



SPRING QUEEN & KING
Janie Hutchison Benny Walker



SENIOR ATTENDANT:
Ardell Held
ESCORT:
Roger Held



SOPHOMORE ATTENDANT:
Cindy Hunziker
ESCORT:
Mike Miller



FRESHMAN ATTENDANT:
Mary Lorber
ESCORT:
Dennis Johnson

Graduation '72



Gordon Ring; valedictorian.



Nancy Logan; salutatorian.

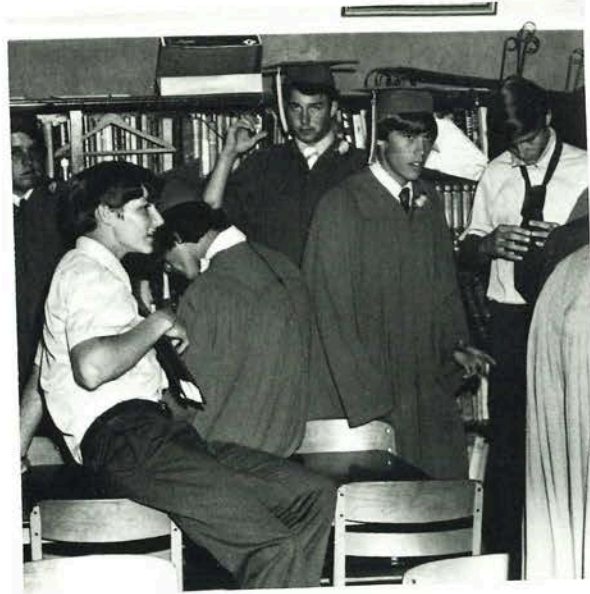


Jay Randolph; speaker.

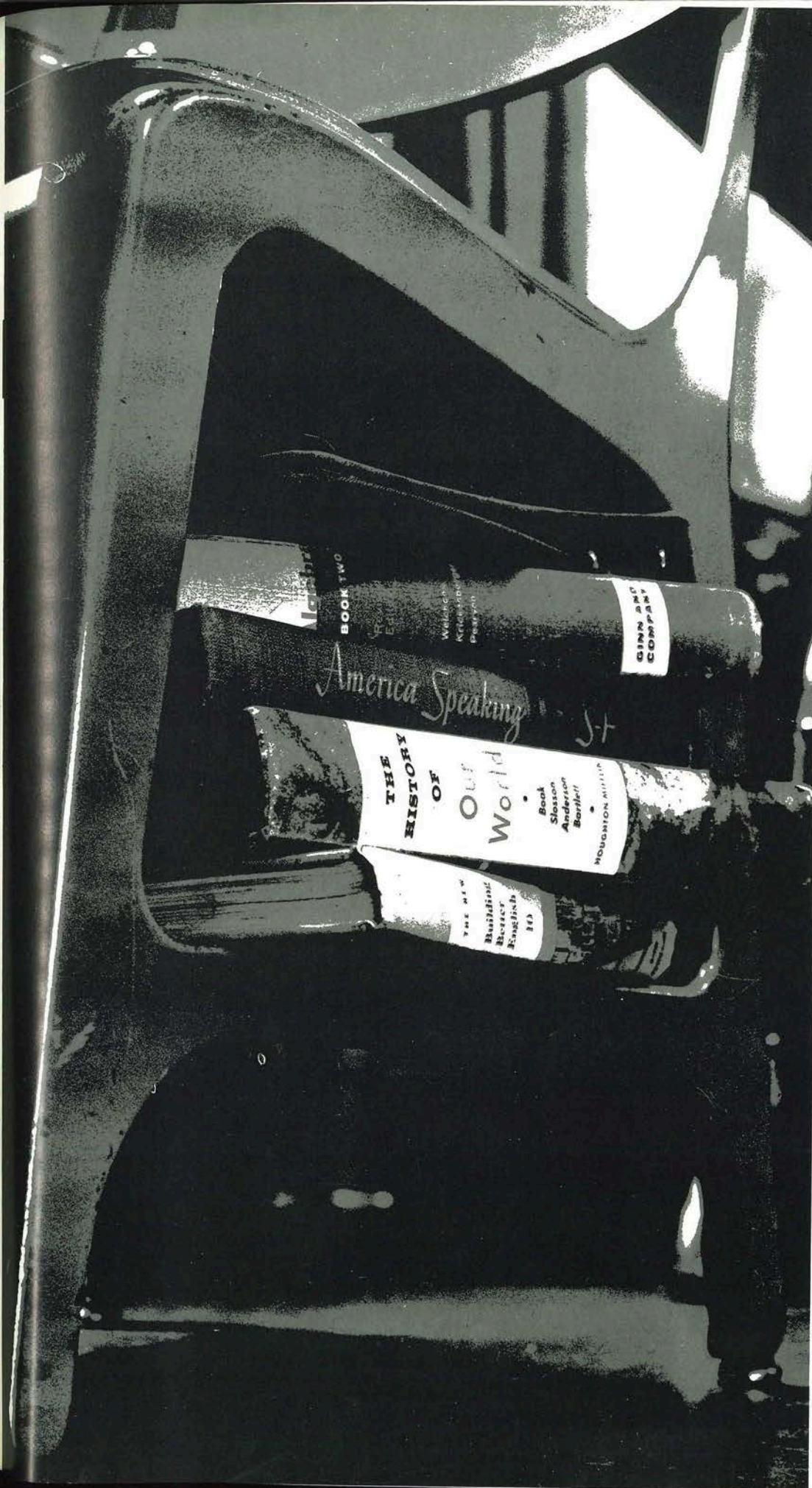




Preparing for their special moment!!!



The seniors of '72 would like to take this space to express their sincere "thanks" for all those who have helped them throughout their years of school to make this occasion possible for them.



JUNIOR HIGH

Eighth Grade

Jacqueline Amrein;
Tom Berebo; Joey
Bleile; Jackie Bierer;
Mary Lou Brandes;
Andrea Buescher;
Janet Copeland.

Eddie Cotton; John
Craig; Arthur Day;
DeWayne Doyle; Billy
Flesch; Terry Frye;
Linda Garrett.

Carl Harrison; Curtis
Hoeft; Bill Hollen-
beck; Vincent Hunn;
Carol Jennings; Shane
LeGrand; Doug Luna.

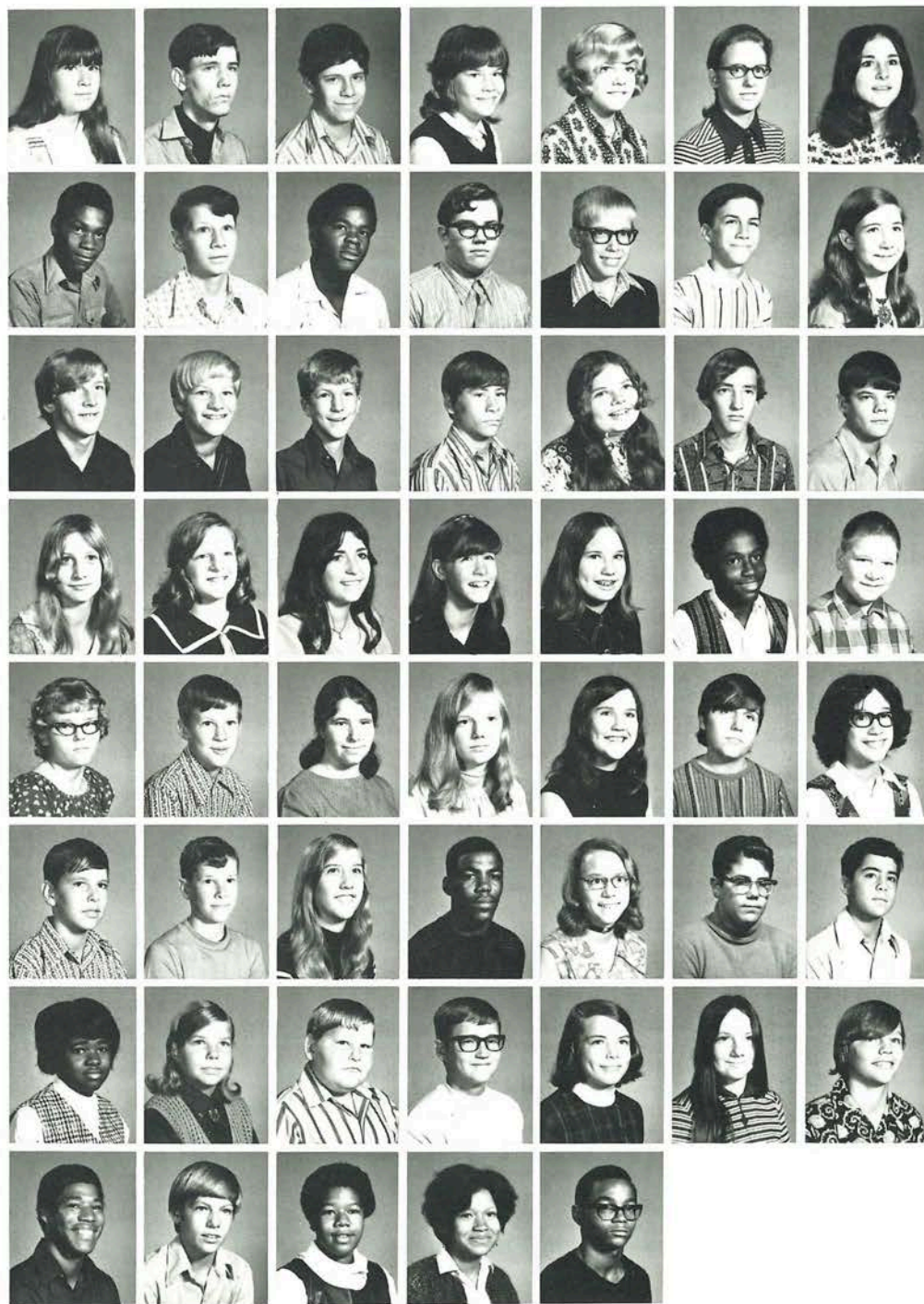
Martha Matthews;
Karen McAffie;
Brenda Meyer; Cindy
Mintner; Carol Mitt-
ler; Dennis Mozee;
Freddie Mueller.

Pamela Nailer; Paul
Nelson; Cheryl New-
comb; Darlene Ost-
mann; Kathy Phegly;
Jeff Redding; Mary
Rodriquez.

Marty Schell; Russel
Schmidt; Cheryl
Schmuke; Roland
Simms; Emma Som-
mers; Mike Stern;
Dave Stroyan.

Josephine Sydnor;
Gail Symes; Johnny
Walker; Kirk Warren;
Virginia Wilding;
Sheila Wilkins; Fred
Williams.

Gary Williams; Kelly
Williams; Wanda Wil-
son; Pam Woolfolk;
Virgil Wyatt.



Seventh Grade

David Alberternst,
Rhonda Barton,
Kenneth Beard,
Christine Bennett,
Alvin Blumenberg,
Timothy Bohler,
Howard Bradshaw.

Katherine Byers,
Mark Cady, Becky
Carr, David Charl-
ton, Keith Clark, Jeff
Cook, Cathy
Copeland.

Ricky Dames, Steven
Dormann, Marjorie
Driemeyer, Joseph
Estes, Faye Fincher,
Hilliard France,
Kathleen Frye.

Robert Gentry,
Patrick Gerdeman,
Timothy Gibbs, Joey
Gipson, Christine
Graven, Tony Grav-
en, Joyce Held.

Judith Helvey,
Michael Hemmer,
Donna Hunt, Tammy
Hunziker, Leslie
Kauble, Felina Ken-
ney, Barbara
Ketchum.

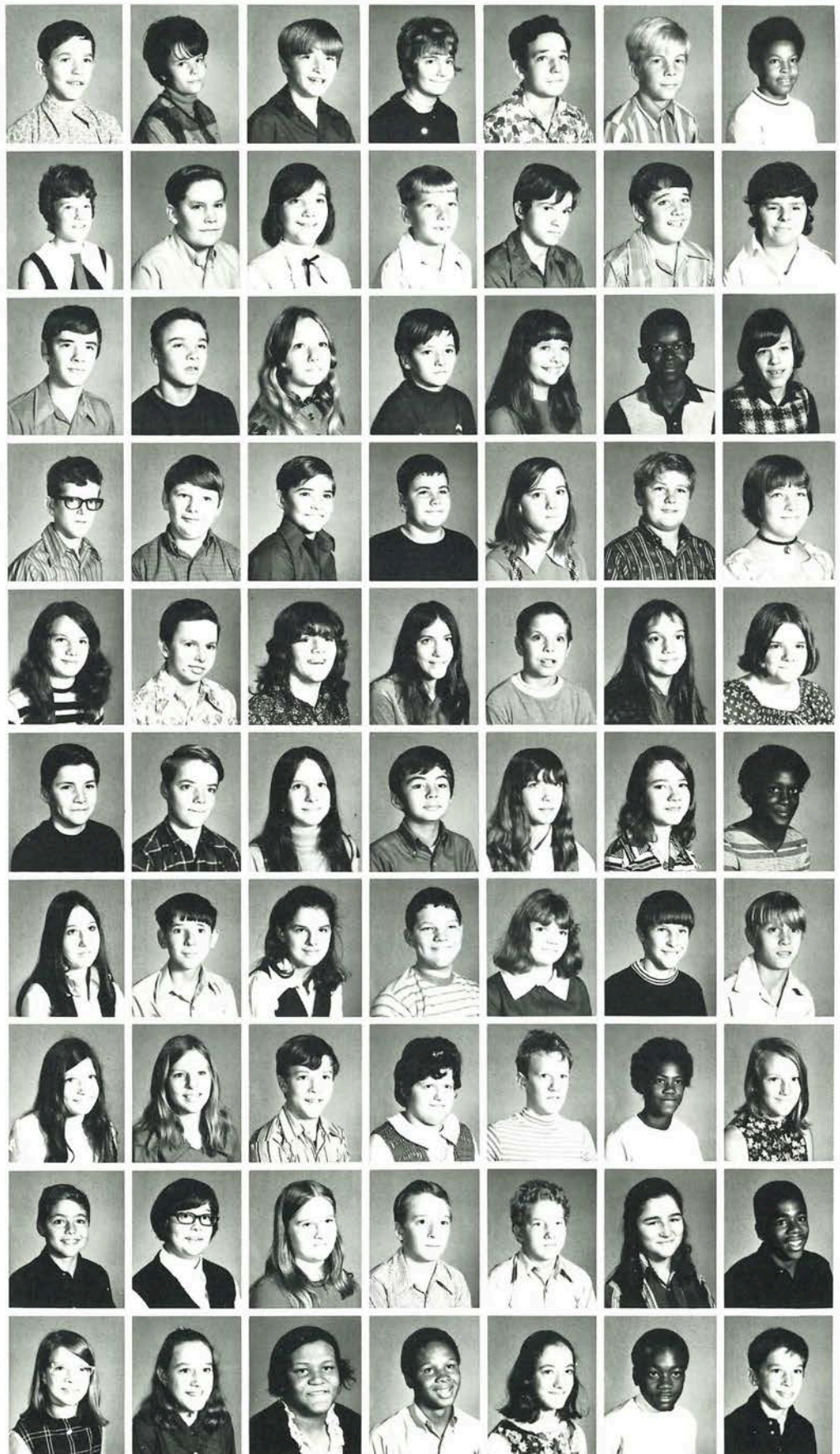
Danny King, Johnny
Lawson, Patsy Lind-
sey, David Maestes,
Laura Manda, Marilyn
Mason, Madeline
Mayfield.

Mary Neill, William
Niemann, Corliss
North, Larry Penrod,
Terry Penrod, Larry
Pettig, Jimmy Platt.

Linda Probert, Jenine
Schell, Larry
Schmitt, Kathy
Schoemaker, Winston
Schreckengast, Rose
Sims, Dana Smith.

Glen Stroyan, Kim
Symes, Bonnie Tal-
ley, Rich Tinsley,
Andy Trantham,
Susie Tucker, Edward
Wallace.

Joan Wilding, Theresa
Williams, Donna
Woolfolk, Patrick
Woolfolk, Candy
Wright, Lester Wyatt,
James Zykan.



Jr. High Basketball

"A"



*T
e
a
m*

8th GRADE TEAM: KNEELING; Kelly Williams, Vincent Hunt, David Stroyan, Billy Flesch, Marty Schell, Curtis Hoeft. STANDING: LEFT TO RIGHT- Arthur Day: Manager, Russell Schmidt, Bill Hollenbeck, Terry Frye, Joey Bleile, Freddie Williams, Kirk Warren, John Walker Manager, Coach Sam Potter.

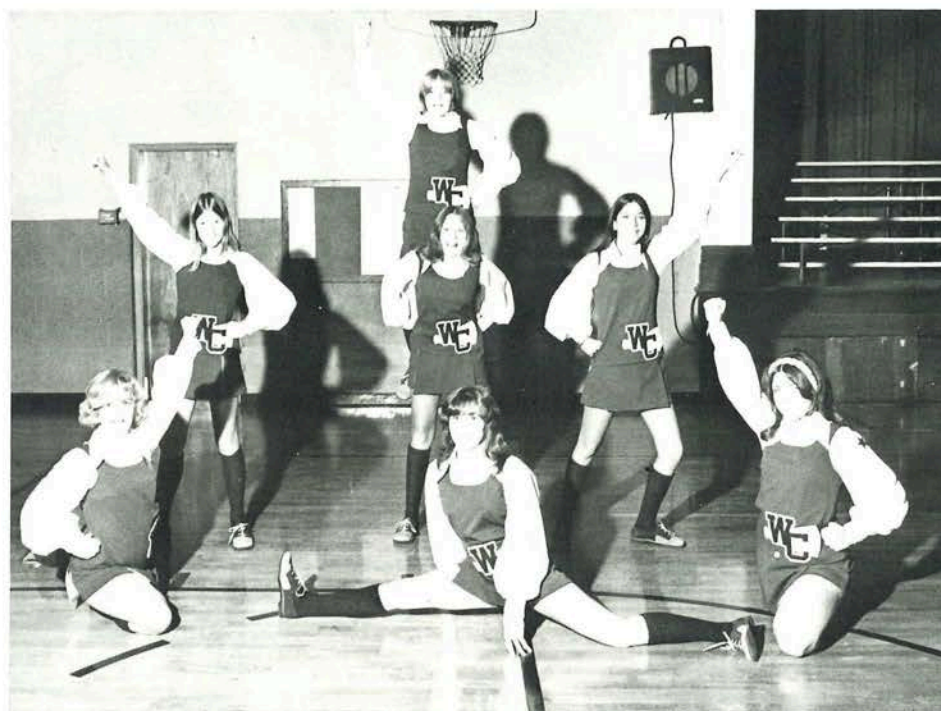
"B"



*T
e
a
m*

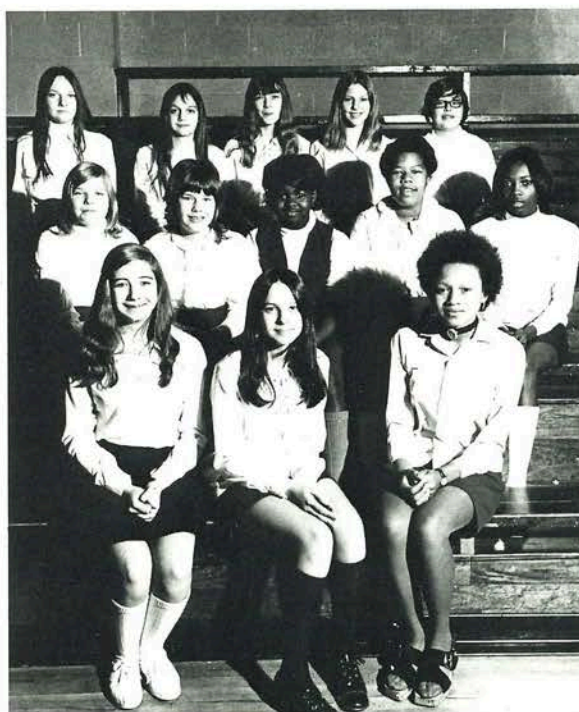
7th GRADE TEAM: KNEELING: James Ziken, Scott Gibs, David Charlton, Kenny Beard, Leslie Kauble, Bobby Gentry. STANDING: Arthur Day Manager, Pat Woolfolk, Howard Bradshaw, Jeff Cook, Al Blumenburg, Larry Petty, Billy Niemann, Mike Hammer, John Walker; Manager, Coach Sam Potter.

Jr. High Cheerleaders



FLOOR-Mary Lou Brandes, Donna Hunt, Brenda Meyer: Captain, STANDING-Dana Smith, Carol Mittler, Tammy Hunziker. TOP-Debbie Reininger.

P e p C l u b



JR. HIGH PEP CLUB: BOTTOM ROLL-Linda Garrett; Treasurer, Patsy Lindsey; Secretary, Pam Woolfolk; President. SECOND ROLL-Gail Symes, Jackie Bierer, Josephine Sydnor, Wanda Wilson, Cynthia Wyatt. THIRD ROLL-Shelia Wilkinson, Felina Kenny, Lara Manda, Genie Schell, Kim Symes.

C o o k s



FROM RIGHT TO LEFT: Garnet Zuhone, Peggy Fliehm, Virginia Tate, Ruth Stevenson, Gladys Eversmeyer.



Winston Schreckengast

C u s t o d i a n s



Alvin Lohman

NOT PICTURED: Ray Requat.

BUS DRIVERS-NOT PICTURED-Ray Ridder, Dan Charlton, Marien Henke, Harry Graveman, Ray Requat, Alvin Lohman, Hennreitta Boyd.

SUITS

0.006.13

MANAGEMENT

MODERN CHEMISTRY

PROBABILITY

ADVENTURES
in living

Entender y Hablar

ADVERTISING

Compliments of

Mike Anderson Nancy Logan Dale Martin Lana Perkins
 David Wilding Steve Wilding James Copling
 David Perkins Cathy & Guideman
 Fredia Cohen Mark Hansen
 Bill Cody Vickie Holladay
 Brian North
 Sharon North
 La Verns Korte
 Martin Palmer
 Bernice Rose
 Brad North
 Gordon Ring
 Sharon Vohsen
 Frank D. Rossett
 Mary Lynn Martin
 Roger
 Ricky Schreebengost
 Carolyn Cox
 Diane Brooper Mary Ann Martin
 LeAnne Schaper Greg Smith
 Karen Schriener
 Nancy Straulinger
 Benny Walker
 50

REMBRANDT STUDIOS

St. Louis, Missouri

Compliments of

UNITED STATES ARMY RECRUITING SERVICE

Tomorrow has arrived at last. You've received your diploma and made plans for college or a job. Perhaps you're just going to have a summer of fun.

One of these days, though, you'll have to consider what kind of work you are going to do. The man who hires you will want a man with education, experience and a worldly outlook. Can you get it while your still young?

You can, and I'll help you. I'm here to tell you about our schools, training and opportunities for travel. Let's talk about pay, GI benefits and your Military obligation.

We've changed a lot in the last few years, and we're still changing for your benefit. Call us today collect, at 724-7272 or stop in and see us at the recruiting station located in St. Charles, Mo. on 5th & Tompkins and use us to plan your future.

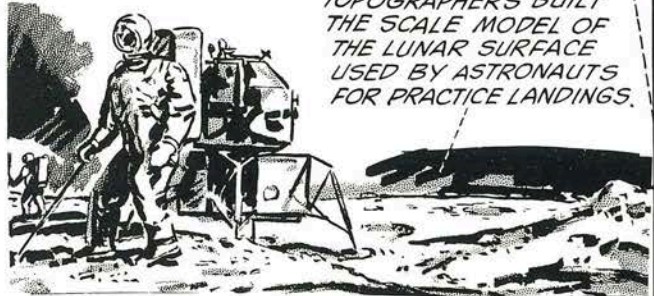
In Our Time

© 1972
4 Grotter

THE ARMY HAS PLAYED A KEY ROLE IN OUR NATION'S EXPLORATION EFFORTS... IT SPONSORED THE LEWIS AND CLARK EXPEDITION THAT OPENED THE NORTHWEST... LEWIS WAS A CAPT., CLARK A LT.

PIKES PEAK IS NAMED AFTER THE ARMY CAPTAIN WHO EXPLORED COLORADO.

EVEN IN SPACE, THE ARMY HAS BEEN A PIONEER! IT CONDUCTED THE WORLD'S FIRST COMMUNICATIONS THROUGH SPACE WHEN IT BOUNCED RADAR PULSES OFF THE MOON... AND ITS TOPOGRAPHERS BUILT THE SCALE MODEL OF THE LUNAR SURFACE USED BY ASTRONAUTS FOR PRACTICE LANDINGS.



Compliments of

BUDDY BUDDY AMUSEMENT CO.

Pin Ball Machines

Jute Boxes

673-2670 or 745-9206

Wright City, Missouri

Compliments of

*K. D. WALLACE
REAL ESTATE CO.
REALTORS*

Farms -- Homes -- Acreage

673-2225



Foristell, Missouri

Compliments of

THE BINKLEY COMPANY

A Company Which Believes That the
Tomorrow of America Depends on
the Youth of Today

Warrenton, Missouri

Compliments of

RITE SOLE CORP.

Wright City, Missouri

Compliments of

PERMANEER CORP.

Wright City, Missouri

Compliments of

BIG BOY'S RESTAURANT

Wright City, Missouri



WRIGHT CITY CHAPTER



WRIGHT CITY CHAPTER

Compliments of

WITTHAUS REALITY AND INSURANCE

Albert Witthaus, Manager

1203 E. Old Highway 40

Warrenton, Missouri

Office
456-3407

Home
745-3570

Compliments of

WRIGHT CITY LANES AND LOUNGE

Free Ample Parking

Summer Bowling

Cocktail Lounge

745-9289

Wright City, Missouri

Compliments of

ECONOMY THRIFTWAY

Call at Your A.G. Store for

Quality Groceries

Fresh Frozen Fruits and Vegetables

745-3400

Wright City, Missouri

Compliments of

WRIGHT CITY MEAT CO.

Harold Duenke

"Life's Most Sought Commodities"

Slaughtering and Processing
Wholesale and Retail

745-3331--Interstate 70

Wright City, Missouri

Compliments of

**HUTCHISON & SCHAPER
EXCAVATING CONTRACTORS**

Phone 745-3528 or 745-3845

Wright City, Missouri

Compliments of

WARRENTON BANNER

Covering Warren County

Parts of Lincoln & Montgomery Counties

with Local News & Advertising.

Warrenton, Missouri

Compliments of

BOB AND KATHY RAGAR

Warrenton, Missouri

Compliments of

COLEMAN INC.

Trucking and Excavating

Quarrying--Highway J, Wright City

Jim Coleman, Prop.

456-3982

Warrenton, Missouri

Compliments of

**BUDDY BUDDY AMUSEMENT
CO.**

For the use of the Jute Box

W.C.H.S. Student Council

Wright City, Missouri

Compliments of

MAGIC CARPET

Sheldon Stephenson, Proprietor

9-5 Monday through Saturday

456-3323

230 East Main

Warrenton, Missouri

Compliments of

EVELYN'S DRESS SHOP

210 East Main

456-3412

Warrenton, Missouri

Compliments of

MARLEN GAS CO.



673-2222

Foristell, Missouri

Compliments of

BUENEMAN'S INCORPORATED



Wright City, Missouri
745-3200

Compliments of

LUKE'S DRIVE-IN

Located on North Service Road
Wright City, Missouri



Inside Heating

Car Hostesses

Air Condition

Hours:

11:00 a.m.
to
11:00 p.m.

Phone 745-2265 for Call In Orders

Compliments of

FARMERS AND MERCHANTS BANK OF WRIGHT CITY



Wright City, Missouri

Compliments of

COMMONWEALTH BANK

The Newest and Fastest

Growing Bank in St. Charles County

Deposits Insured by

The Federal Deposit Insurance Corp.

327-8115

Wentzville, Missouri

Compliments of

DURO-FLEX COMPANY

Foristell, Missouri

Compliments of

FINA

Northeast Corner of Overpass

Wright City, Missouri

Compliments of

DR. J. R. BECKMEYER

Wright City, Missouri

Compliments of

WRIGHT CITY LIONS CLUB



Wright City, Missouri

Compliments of

CISSELL'S PACKAGE LIQUOR INC.

"See Us for Those Weekend Outings"

327-9636

Darrell Thompson
Owner

305 Highway 61
Wentzville, Missouri



TRADE MARK & PAT. OFF.
Uregas
(YOUR GAS)

Dependable Bulk and Bottled

GAS SERVICE

Phone GLadstone 6-3329

WARRENTON

Compliments of

SANDERS GULF SERVICE

Auto Repair and Body Shop

Pre-Owned Cars and Trucks

Road Service and Towing

All Work Guaranteed

I-70 and South Service Road

Wright City, Missouri

Gene
Sanders

745-9292

Compliments of

OAK GROVE UNLIMITED INC.

Mobile Home Sales and Subdivision

456-2408
Box 264
Warrenton, Missouri 63384

Compliments of

MISSOURI STATE TELEPHONE CO.

Wentzville, Missouri

Compliments of

SMITTIE'S PACKAGE LIQUORS

See Us For Thirst Quenchers

John Schmitt, Owner

100 Elm Street
Wright City, Missouri

Compliments of

FAIRWAY FORD

456-2233

Warrenton, Missouri

Compliments of

WRIGHT CITY LUMBER COMPANY

Division of Wentzville Lumber Co.

745-3315

Wright City, Missouri

Compliments of

WENTZVILLE STATE BANK



Deposits Insured by
The Federal Deposit Insurance Corporation
5 W. Pearce Blvd.
Wentzville, Missouri

Compliments of

SCHETTLER'S MART

Open 7 Days a Week — 7:30 a.m. — 10 p.m.

All Fresh Cuts of Choice Meats
Processing for Home Freezers
Pkg. Liquor — Bag Ice
Fancy Groceries

Warrenton

Missouri

Compliments of

A FRIEND

Compliments of

BIG 3 MOTORS INC.

Chevy--Olds--Pontiac

456-3318

Warrenton, Missouri

Compliments of

WENTZVILLE PHARMACY

Your Prescription Specialist

Chas. Finn, R.Ph.

FA 7-6248
515 W. Hwy. 40
Wentzville, Missouri

Compliments of

WARNER'S DRUG STORE

745-9270

Wright City, Missouri

Compliments of

MO-CON, INC. OF WENTZVILLE

Ready-Mixed Concrete
Mo-Conaire Sewage Aeration Disposal
Concrete and Haydite Blocks
South Outer Road, West I-70
Wentzville, Missouri

Compliments of

WRIGHT CITY CHURCHES

The Baptist Church
United Church of Christ
The Methodist Church
Church of the Nazarene

Wright City Ministerial Alliance

Compliments of

WARRENTON FLOWER SHOP

National Florist Delivery, Inc.

For Gracious Living Use Flowers

456-3397 or 745-2536

515 N. Highway 47

Warrenton, Missouri

Compliments of

ANN'S LAUNDRY & CARWASH

Mr. and Mrs. Earl Gerdeman

745-3398

Wright City, Missouri

Compliments of

B.J. T.V. & APPLIANCES



Day: 745-3404

Wright City, Missouri

Night: 745-2503

Compliments of

LUTHER'S SINCLAIR SERVICE AAA

456-9984

24 Hour Wrecker Service -- 456-3581

Interstate 70 and Hwy. 47

Warrenton, Missouri

Compliments of

WENTZVILLE CONSTRUCTION CO., INC.

General Contractors

Residential--Commercial

Basement Foundations Poured

R. W. Demien
FA 7-4779
FA 7-8161

Wentzville, Missouri

L. E. Hinderson
FA 7-4813

Compliments of

GERARD'S FARM & HOME CENTER

ITCO Associate Dealers

1201 E. Old Hwy. 40

Warrenton, Missouri

Compliments of

DANNIE'S SERVICE & AUTO BODY

New or Used Cars

745-3436 or 745-3236

Bear Wheel Alignment and Frame Straightening

24 Hour Wrecker Service--745-3487

Wright City, Missouri

Compliments of

WYATT DISTRIBUTING CO.



456-3384

Route 2

Warrenton, Missouri



Compliments of

MFA INSURANCE AGENT

Mike Schriener
745-2514
Wright City, Missouri

Compliments of

JET PRODUCTS

Warrenton, Missouri

Compliments of

MIDWAY

Garage — Towing — Service Station
24 Hour Wrecker Service
South Service Rd. Between Wright City and Warrenton

Compliments of

WARRENTON ARENA

Dining, Dancing, and Cocktails
456-2111
Warrenton, Missouri

Compliments of

METTE'S FAMILY SHOE STORE

Handbags, Hose, Shoe Repair

Best Name Brands at the Lowest Price.

Party and Wedding Shoes Tinted

East S. Main St.

Wentzville, Missouri

Compliments of

RED WHEEL RESTAURANT

and Gift Shoppe

Interstate 70 and State Route 47

314-456-2312

Betty and Al Leek

Box 159
Warrenton, Mo.

Compliments of

RAYMOND A. KOEHLER
"HOUSE DOC"

Compliments of

WESTERN AUTO

The Family Store

For Your Convenience Shop at Home With Your Owner

Ben Hays

Warrenton, Missouri

Compliments of

DON AND MELBA McCARVER

Portraits--Commercial--Weddings

327-4280

411 West Pearce Boulevard
Wentzville, Missouri

Compliments of

GAMBLE'S IN WENTZVILLE

Carl Carter, Owner

712 Pearce Boulevard

327-4615

Compliments of

OWEN'S REST HOME

205 Southwest Avenue

Phone 745-3537

Wright City, Missouri

Compliments of

VIC'S RESTAURANT

Open 24 Hours

Highways 40-61

327-4651

Wentzville, Missouri

Compliments of

KROGER

Store Hours:
8:00 to 8:00 Daily
8:00 to 9:00 Fridays
8:00 to 8:00 Saturdays
456-2324
Warrenton, Missouri

Compliments of

DR. AND MRS. MacRAE

Compliments of

WRIGHT CITY GAS

Harold Oberlag, Manager

745-3113
Wright City, Missouri

Compliments of

RED DOOR ANTIQUES

North Service Rd., East

Virginia Village

456-8854
Warrenton, Missouri

Compliments of

NORTON-DAVIS TRUCKING, INC.

Tandem and Dumps

Porter Norton
528-4686

Carl W. Davis
528-7405

P.O. Box 203
Troy, Missouri

Congratulations to the 1972 Graduating Class

from

**KIEFER-McCORKELL NURSERY
AND LANDSCAPE SERVICE**

Wentzville, Missouri

Compliments of

BUSHNELL LINOLEUM AND CARPET

Draperies — Shades — Wallpaper

Highway 70 Wentzville, Missouri

327-6210

Compliments of

HAROLD H. HUFFMEIER

Real Estate Broker

604 W. Pearce Blvd.

Wentzville, Missouri

327-4725

Compliments of

BOB PHEGLEY

Wright City, Missouri

Compliments of

VIRGINIA VILLAGE

Warrenton, Missouri

Compliments of

MUELLER'S IGA

Low Prices Every Day
North 2nd and Locust Street
Wright City, Missouri

Compliments of

TRI-COUNTY ASPHALT CO., INC.

Blacktop Driveway — Parking Lots — Streets — Playgrounds
Wentzville and Troy

327-4695

528-4686

528-7405

Compliments of

H. F. HOELSCHER, M.D.

Warrenton, Missouri

Compliments of

MISSOURI STATE TELEPHONE CO.

456-3355

Warrenton, Missouri

Compliments of

TOMEK'S VARIETY STORE

745-2255

Wright City, Missouri

Compliments of

WARRENTON CLEANERS

Your clothes best friend!

For the best in odorless dry-cleaning

fast and personal service

Leave Wednesday at Tomeks — Pick up on Friday

Compliments of

LEROY DOCKLER AND SONS EXCAVATING

Basements dug and Backfilling and Grading

327-3695

Wentzville, Missouri

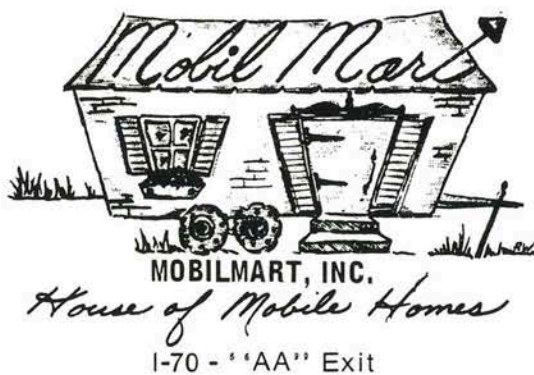
Compliments of

WRIGHT CITY BARBER SHOP

Bruce Groeper, proprietor

Wright City, Missouri

Wentzville,
Missouri



Phone:
1-327-4900

Compliments of

WRIGHT CITY MOBIL HOMES

One Half Mile East of North
Service Road

Wright City, Missouri

Compliments of

BUY RITE MEAT CO.

Wentzville, Missouri

<p>Compliments of</p> <p>MATTINGLY'S</p> <p>5¢ to \$1.00 Stores</p> <p>Campus Shopping Center</p> <p>Warrenton, Missouri</p>	<p>Compliments of</p> <p>A FRIEND</p>
<p>Compliments of</p> <p>SEARS CATALOG STORE</p> <p>327-4066</p> <p>Wentzville, Missouri</p>	<p>Compliments of</p> <p>MAJOR ENTERPRISES</p> <p>Sales and Services</p> <p>Howard Kauble, Proprietor</p> <p>RFD# 1</p> <p>Wright City, Missouri</p>
<p>Compliments of</p> <p>LYNN REALITY</p> <p>North Service Road</p> <p>456-3335</p> <p>Warrenton, Missouri</p>	<p>Compliments of</p> <p>BERRY PARK</p> <p>327-4926</p> <p>Wentzville, Missouri</p>
<p>Compliments of</p> <p>SEARS CATALOG MERCHANT</p> <p>Lowell Frei</p> <p>456-2511</p> <p>101 North East Street</p> <p>Warrenton, Missouri</p>	<p>Compliments of</p> <p>KWRE</p> <p>456-3311</p> <p>Warrenton, Missouri</p>

<p>Compliments of</p> <p>BURGGRABE TRUCKLINE</p> <p>456-3381</p> <p>Warrenton, Missouri</p> <p>Frick Terminal</p> <p>Eighth and Howard</p> <p>St. Louis, Missouri</p>	<p>Compliments of</p> <p>E. SHOWENGERDT & SON</p> <p>Warrenton, Missouri</p>
<p>Compliments of</p> <p>STEWART'S REXALL DRUG</p> <p>Pharmacist on Duty at</p> <p>All Times</p> <p>Warrenton, Missouri</p>	<p>Compliments of</p> <p>McCOY'S</p> <p>A.G. MARKET</p> <p>673-2619</p> <p>Foristell, Missouri</p>
<p>Compliments of</p> <p>ELMER SPRICK, JEWELER</p> <p>Bulova Watches</p> <p>Cosmic Remounting</p> <p>Rings</p> <p>109 East Main</p> <p>Warrenton, Missouri</p>	<p>Compliments of</p> <p>THE LITTLE STORE</p> <p>Open Everyday</p> <p>745-3185</p> <p>Wright City, Missouri</p>
<p>Compliments of</p> <p>KATIE JANE MEMORIAL HOME</p> <p>Warrenton, Missouri</p>	<p>Compliments of</p> <p>TURNER TV</p> <p>Your New Discount Store</p> <p>456-3359</p> <p>Warrenton, Missouri</p>

<p>Compliments of</p> <p>DOROTHY'S BEAUTY SALON</p> <p>Dorothy Singer Doris Lynch Grace Hampel Karen Wommack</p> <p>745-3600 Wright City, Missouri</p>	<p>Compliments of</p> <p>GROEPER OIL CO.</p> <p>745-3422</p> <p>Wright City, Missouri</p>
<p>Compliments of</p> <p>STUDE REALTY CO.</p> <p>201 South Highway 47</p> <p>456-2345</p> <p>Warrenton, Missouri</p>	<p>Compliments of</p> <p>MARGIE'S LOUNGE</p> <p>745-9463</p> <p>Wright City, Missouri</p>
<p>Compliments of</p> <p>WENTZVILLE A&W DRIVE-IN</p> <p>Quality Food at Reasonable Prices</p> <p>327-6992</p> <p>Wentzville, Missouri</p>	<p>Compliments of</p> <p>WRIGHT CITY GARAGE</p> <p>745-2220</p> <p>Wright City, Missouri</p>
<p>Compliments of</p> <p>MISSOURI TYPEWRITER EXCHANGE</p> <p>New and Used Royal Typewriters and Victor Adding Machines</p> <p>501 South Linn 327-6390 Wentzville, Missouri</p>	<p>Compliments of</p> <p>M.F.A. FARMER'S ELEVATOR</p> <p>745-3515</p> <p>Wright City, Missouri</p>

<p>Compliments of</p> <p>EDNA'S DRESS SHOP</p> <p>745-3804</p> <p>Wright City, Missouri</p>	<p>Compliments of</p> <p>BILMAC PRESS, INC.</p> <p>Printers — Stationers</p> <p>William C. McCracken, Pres.</p> <p>Office phones —</p> <p>456-3461; 456-3462</p> <p>Highway 47 & Old 40</p> <p>See us for your</p> <p>Office and School Supplies</p>
<p>Compliments of</p> <p>BRECKENRIDGE LUMBER COMPANY</p> <p>Wentzville, Missouri</p>	<p>Compliments of</p> <p>NIEBURG FURNITURE AND UNDERTAKING CO.</p> <p>Funeral Director</p> <p>Oxygen Equipped Ambulance</p> <p>Air Conditioned Chapel</p> <p>745-3315 Wright City</p>
<p>Compliments of</p> <p>A & W DRIVE-IN</p> <p>Warrenton, Missouri</p>	<p>Compliments of</p> <p>ROBERT L. LEWIS</p> <p>County Surveyor</p> <p>Wright City, Missouri</p>
<p>Compliments of</p> <p>GENE'S TEXACO SERVICE</p> <p>Complete Ignition Service</p> <p>U-Haul Rentals</p> <p>Gene Brown, Owner</p> <p>Wright City, Mo.</p>	<p>Compliments of</p> <p>TEXACO</p> <p>Gilbert Reese - -Manager</p> <p>456-9921</p> <p>Intersection of I-70 and H. 40</p> <p>Warrenton, Missouri</p>

<p>Compliments of BANK OF TROY "We Appreciate Your Business" Troy, Missouri 528-8256</p>	<p>Compliments of DR. L. H. KELLER, D.D.S. Dentist Wentzville, Missouri</p>
<p>Compliments of P. N. HIRSCH Warrenton Campus Shopping Center Warrenton, Missouri 456-2221</p>	<p>Compliments of DR. SIDNEY STOLLER, DENTIST Office Phone 456-3362 Home Phone 456-8405 Warrenton, Missouri Virginia Village</p>
<p>Compliments of WRIGHT CITY STANDARD SERVICE 745-9297</p>	<p>Compliments of WRIGHT CITY CLEANERS Wright City, Missouri</p>
<p>Compliments of THIRD HOUR STUDY HALL Wright City, Missouri</p>	<p>Compliments of ORBIT TOOL CO. & MACHINE SHOP 327-6246 Wentzville, Missouri</p>

D.S.

RS

<p>Compliments of PIEPER BROTHERS 66 SERVICE Warrenton, Missouri</p>	<p>Compliments of McCOY'S A.G. MARKET 673-2619 Foristell, Missouri</p>
<p>Compliments of DR. & MRS. T.H. BRUNE AND FAMILY 456-3361 Warrenton, Missouri</p>	<p>Compliments of MACHINE SHOP 327-6264 Wentzville, Missouri</p>
<p>Compliments of A. STAMER CO. Wright City, Missouri</p>	<p>Compliments of TRI-CHEM Dianne Henry Wright City, Missouri</p>
<p>Compliments of WRIGHT CITY MOTEL Wright City, Missouri</p>	<p>Compliments of M.F.A. OIL COMPANY All Petroleum Products Truck Deliveries Manager--Jimmy Williams 745-2236 Wright City, Missouri</p>