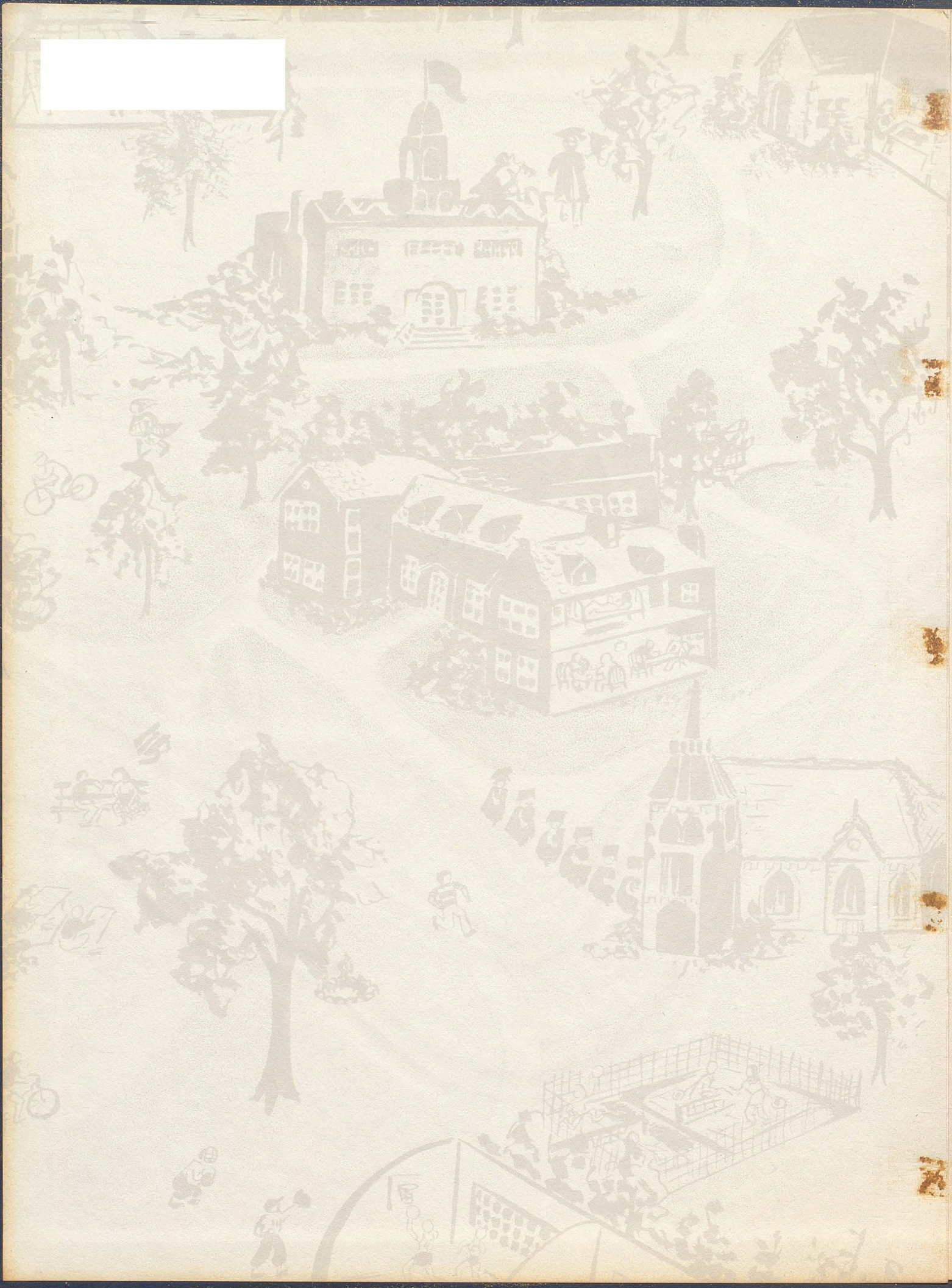




Wildcat Echoes  
1953





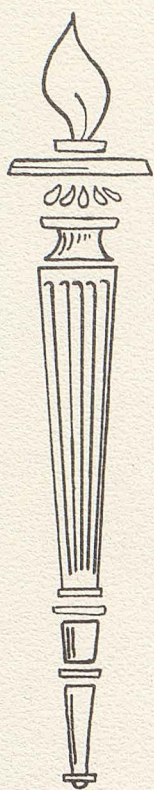


# Wildcat

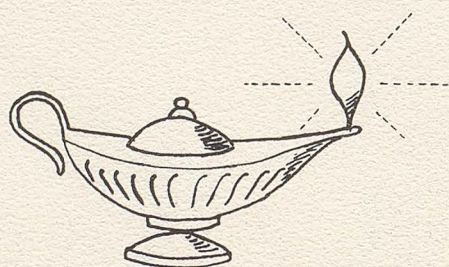


# Echoes





# Dedication

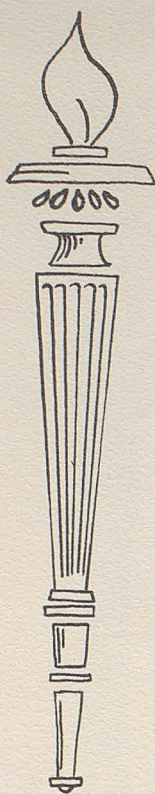




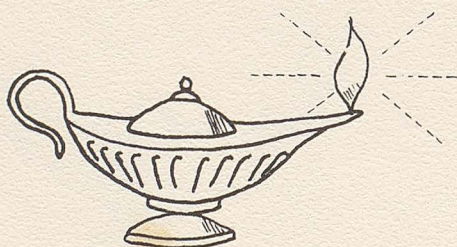


We, the staff of the Wildcat Echoes of 1953, dedicate this yearbook to our commerce teacher, Miss Betty Stuart, in deep appreciation of her constant guidance and interest in our activities, both socially and commercially, which have contributed greatly to our school.





# Administration







F. C. Small  
Superintendent  
Social Studies



Iris Schaper  
Secretary



Joseph Boeker  
Coach, Science,  
History



Ann Stamer  
English and  
Algebra



Ermanell Joslin  
Vocational Home  
Economics



Betty Stuart  
Commerce



James Fortune  
Music



James Burris  
Vocational  
Agriculture



# Year Book Staff

Editor in Chief . . . . .	Donald Bote
Assistant Editor . . . . .	Shirley Koelling
Production Manager . . . . .	Ronnie Harpster
Business Manager . . . . .	Lester Sontag
Advertising and Yearbook Sales . . . . .	Harvey Hughes
	Terry Shortal
Art Editor . . . . .	Bert Singer
Sports Editor . . . . .	Norton Kennedy
	Francis Null
Social and Literary Editor . . . . .	Lois Feix
Class Editors . . . . .	Janet Walker
Senior . . . . .	Rose Marie Ordelheide
Junior . . . . .	Ray Welge
Sophomore . . . . .	Betty Stamer
Freshman . . . . .	Paul Godt
Typists . . . . .	Marilyn Hughes
	Mary Ellen Diven
Sponsor . . . . .	Miss Stuart



First Row: Harvey Hughes, Ray Welge, Bobbie Hasekamp, Paul  
Jou. Second Row: Betty Stamer, Rose Marie Ordelheide,  
Mary Beth Govoreau. Mary Ellen Diven, Bert Singer, Marilyn  
Hughes, Shirley Koelling. Third Row: Janet Walker, Darlene  
Nistendirk, Marvel Park, Lois Feix, Francis Null, Shirley  
Ryker, Miss Stuart. Back Row: Donald Bote, Don Hoech,  
Roland Niemann, Norton Kennedy, Terry Shortal, Ronnie  
Harpster, and Lester Sontag.





Seniors





Harvey Hughes, President

Band 50, 51, 52, 53; Glee Club 51, 52, 53; Mixed Chorus 52, 53; Year Book Staff 53; Paper Staff 52, 53; King of Hearts candidate 53; Class Vice-President 52; President 53; FFA 50; Jr. Play 52.



Shirley Groeper, Vice-President

Basketball 52, 53; Glee Club 50, 51, 52, 53; Mixed Chorus 52, 53; Band 51, 52, 53; Year Book Staff 53; Paper Staff 52, 53; FFA Queen candidate 51; FFA Queen 53; Class President 51; Vice-President 53; FHA President 53; Jr. Play 52.



Marilyn Hughes, Secretary

Glee Club 50, 51, 52, 53; Year Book Staff 53; Paper Staff 52, 53; Class Secretary 52, 53; Mixed Chorus 52, 53; FHA Parliamentarian 52; Jr. Play 52; Roosevelt High School 50.



Shirley Ann Ryker, Treasurer

Cheerleader 51, 52; Class Vice-President 50, 51; Class Treasurer 52, 53; Class Reporter 51, 52; FHA Secretary 51, 52; FHA Treasurer 52, 53; Glee Club 50, 51, 52, 53; Mixed Chorus 52, 53; Band 51, 52, 53; Jr. Play 52.



Donald Ray Bote

Editor, Year Book Staff 53; Student Council 50; President FFA 52, 53; Live stock Judge 51; Farm Mechanics 53.







Juanita Brockfeld  
Basketball 52; Glee Club 50, 51, 52,  
53; Mixed Chorus 50, 51, 52, 53; Minstrel  
53.



Mary Ellen Diven  
Basketball 53; Band 53; Glee Club 53;  
Mixed Chorus 53; Year Book Staff 53; FHA  
53; Elsberry High School 50, 51, 52.



Frank Driemeyer  
FFA 50, 51, 52, 53; FFA Treasurer 52,  
53; State Farmer Certificate 53; Glee  
Club 52, 53.



Ronnie Harpster  
Basketball 52, 53; Glee Club 52, 53;  
Mixed Chorus 52, 53; Year Book Staff 53;  
Editor, Paper Staff 52, 53; Student Coun-  
cil 52; Jr. Queen Escort 52; Jr. Play 52;  
Minstrel 53; Jr. Class President 52;  
North High School 50, 51.



Roland Niemann  
Band 50, 51, 52, 53; Year Book Staff  
53; Secretary FFA 52, 53; FFA 50, 51, 52,  
53; Live stock Judging 51, 52; Farm Mech-  
anics 53.







Rose Marie Ordelheide

Glee Club 50; Band 50; Year Book Staff 53; FFA Queen Candidate 50; Secretary of Class 50, 51; FHA 50, 51, 52, 53;



Wayne Schroer

Basketball 50, 51, 52, 53; Student Council 53; FFA 51, 53; FFA Reporter 53.



Bert Singer

Basketball 50, 51, 52, 53; Captain Basketball Team 53; Cheerleader 52; Glee Club 50, 52, 53; Mixed Chorus 53; Year Book Staff 53; Paper Staff 52, 53; FHA 51, 52; FHA Queen 51; Year Book Queen candidate 53; Class Reporter 51; Class Treasurer 52; Jr. Play 52.



Janet Walker

Cheerleader 53; Glee Club 53; Mixed Chorus 53; Band 53; Year Book Staff 53; Paper Staff 53; FHA 53; St. Charles High School 50, 51, 52.



Mr. Joseph Boeker, Sponsor



# Senior Class History

It's the year 1941 on the first day of school. The first grade class of Wright City is coming timidly with their parents to start their education. Among the members of the class is Rose Marie Ordelheide and Ronnie Harpster. Like all first grade classes, they were shy at first; but as they grew older the shyness disappears in some of the students and tarries with others.

These little first grade children soon grow up to be in the second grade, and then the third grade. Their lives are a little confused as there were several teachers that year. Fortunately, they made it through the third grade and are ready to climb the ladder of learning.

In the fourth grade they begin to study geography and history; and by the time the fifth and sixth grades are reached, they can read and do arithmetic very well.

In the seventh and eighth grades they are preparing to begin a high school career.

Finally the big day is reached. Freshmen at last! As they attend school on that day in 1949 they are somewhat surprised at the change of things--going from class to class, seeing so many people, and making new friends. There are 19 in the class this year and soon they learn that their sponsor is Mr. Heuse. The officers were elected as follows:

- President - Ivaree Schreckengast
- Secretary - Rose Marie Ordelheide
- Treasurer - Donna Smiley
- Student Council - Helena Geery and Donald Bote

One of the highlights of the year is the Freshman initiation and party. Miss Rose Marie Ordelheide was the charming candidate for the FFA Aueen and Wayne Schroer was the "King of Hearts" candidate. Donna Smiley was the candidate for the Carnival Queen. This year we see several couples walking hand-in-hand down lovers lane. Among them are Rose Marie and Floyd, and Ivaree S. and Ronald Leight.

The Sophomore year started off very well. The officers for this year were:

- President - Shirley Groeper
- Vice-President - Shirley Ryker
- Secretary - Rose Marie Ordelheide
- Treasurer - Ann Sutton
- Student Council - Ivaree Schreckengast and Bob Kempfer

The freshmen looked very funny in their initiation and we had a lot of fun at the party. Miss Paul, our sponsor, assisted us in planning our activities for the year. There were about 17 in the class this year. Shirley Groeper made a very charming FFA Queen candidate. At the "Sadie Hawkin's Day" dance, Bertha Singer and Bob Kempfer were cute as "Daisy Mae and Li'l Abner." This year in Cupid's corner are some new couples added to it: Jeanne Cross and Bill Mikus, Shirley Groeper and Dale Van Horn, Bert Singer and Vernon Logan.



Upper classmen at last! This is a big year for all of us. We had to give a play and we had to plan and sponsor a prom. We had two sponsors this year, Miss Speer and Mr. Duffield. As officers, we chose:

President - Ronnie Harpster  
Vice-President - Harvey Hughes  
Secretary - Marilyn Hughes  
Treasurer - Shirley Ryker  
Cheerleaders - Bert Singer and Shirley Ryker

Ivaree Schreckengast was our representative for Carnival Queen. Our Junior play, "Life of Reilly" helped pay for the prom. Ronnie and Marilyn had leading roles in the play with Harvey, Bert, Pat Nelson, Ivaree, Vera Hopper, Leonard Soebbing and the two Shirleys as supporting cast.

We then set to work on the prom with "Club 52" as our theme. The gym was decorated with gold and blue crepe paper and small tables surrounding the dance floor to give a nightclub effect. Music was furnished by the "Cavaliers." Refreshments were served by members of the Sophomore Class. Twosomes in our lovers corner are Bert and Norton, Shirley Groeper and Bob Kempfer, and Marilyn Hughes and Dick Stapleton.

And now we have reached that long awaited day. Seniors! There are only eight who have stayed with us all four years and only two, Rose and Ronnie who started together in the first grade. Rose is the only one who has spent all her school years here.

There are 14 in the Senior Class of 1953, whose able sponsor is Mr. Boeker. Our final choice for officers is:

President - Harvey Hughes  
Vice-President - Shirley Groeper  
Secretary - Marilyn Hughes  
Treasurer - Shirley Ryker  
Student Council - Bert Singer and Wayne Schroer

Janet Walker was our cheerleader and reporter. We were honored to have Shirley Groeper chosen FFA Queen. At one of the high-lights of the year, the FHA Valentine Party, our candidate for "King of Hearts" was Harvey Hughes; and our candidate for year-book queen was Bert Singer. We are all looking forward to the prom which the Juniors have scheduled for May 2, and the Senior trip which promises to be a lot of fun for all of us. In Cupid's corner we see third-finger, left-hand evidences of lasting associations for some of our group, while others are developing new interests--to wit--Rose and Floyd, Bert and Norton, Janet and Larry, Mary Ellen and Ross, and Shirley G. and Charles S.

We've told you our Past,  
Our Present you know,  
Our Future, who knows,  
As from W. C. H. S. we go.



# Senior Class Will

We, the Senior Class of Wright City High School, City of Wright City, County of Warren; State of Missouri, Country of United States, Continent of America; being of sound mind, knowing that the end is coming, do hereby publish and declare our last will and testament.

## ARTICLE I

We, the Seniors of 1953, do bequeath to the faculty the memory of our studious efforts and smiling faces. May you never forget them.

## ARTICLE II

To the future Seniors of Wright City High School, we leave our undying efforts to always please the students and faculty of Wright City High School.

## ARTICLE III

To the Juniors-to-be we give our ability to make money to go on a senior trip and to pay for the prom.

## ARTICLE IV

To the Sophomores, We will our ability to come to classes late. It's very hard to do, so you should treasure it always.

## ARTICLE V

To the Freshmen we will our ability to have fun, because four years go by very quickly.

## ARTICLE VI

I, Donald Ray Bote, will my English work book to Marvin Schubert. (May he use it wisely.)

I, Juanita J. Brockfeld, will my ability to write letters to Junior Twiehaus, so that he can write to Troy.

I, Mary Ellen Diven, bequeath my ability to assume the air of a dignified preacher's daughter to Ruth Hoech, even though she is already a typical preacher's daughter.

I, Frank Driemeyer, will my milking ability to Lonnie Williams.

I, Shirley Groeper, will my ability to do bookkeeping to Lester Sontag. Do something with it Lester; I couldn't.

I, Ronnie Harpster, will my exuberant singing ability to Charles Milan and Paul Godt.



I, Harvey Hughes, will my fine collection of modern cars I have had in high school to Connie Haller. Finish getting them ready for junk, Connie.

I, Marilyn Hughes, will my ability to argue with Mr. Small to somebody who doesn't have nerve enough.

I, Roland Niemann, will my ability to make E's in algebra and music to the Gosney Brothers who really don't need it.

I, Rose Marie Ordelheide, bequeath my ring to Shirley Koelling.

I, Shirley Ryker, will my shortness to Betty Stamer. (I hope she can use it.

I, Wayne Schroer, will my abundant basketball ability to Robert Lewis.

I, Bertha Singer, will my old dirty basketball socks to Sally Smiley; maybe she can use them next year.

I, Janet Walker, will my ability to write poetry to whoever wants to rack his brain trying to think of words that rhyme.

The Senior Class of 1953





Juniors



# Junior Activities

The Juniors started their 1952-53 school year by electing the following officers:

Sally Smiley. . . . President. . Phyllis Cook. . . Treasurer  
Norton Kennedy. . . V-President. . Ray Welge . . . Reporter  
Shirley Koelling. . . Secretary. . Phyllis Cook. . Cheerleader  
Marlene Lemke. . . . Student Council. . . . Donald Hoech

The Juniors added three new students to their roster; Carolyn Jaspering of Wright City, Margarite Scheitz from Homburg, Frankfurt, and Ray Welge from St. Charles; however, we lost Claude and Clifford Gosney at the end of the 3rd quarter. We were very lucky to have Mrs. Ann Stamer as our sponsor.

We started the year with a 'bang' by selling school caps, wildcat emblems, and pennants. These were a token of our school spirit. The Juniors held their bake sale Saturday, March 14, at Stamer's store. We are proud to say that it was a success.

We had tryouts for the Junior Play which we gave Thursday, evening, November 13. The actors for the Junior Play, "Looks Like Rain," were as follows: Don Hoech portrayed Monty Mansfield, the proprietor of the Sherwood Inn. Norton Kennedy was Monty's good friend, Reggie Van Wert, an ambitious author. Elmo Armstrong was Monty's cousin, the neat and refined lawyer who tried to cheat Monty out of a fortune. Ray Welge played Elmo's part. Junior Twiehaus portrayed the part of Jerry Watson, the late proprietor. Nellie Watson was Jerry's daughter who had her eyes on Monty. Nellie was portrayed by Marlene Lemke. Shirley Koelling was Martha Watson, Jerry's better-half. Sally Smiley played the part of Vilut Hickey, Monty's neighbor who made your sides ache from laughter. We had a wonderful time preparing the play for presentation.

We are proud to say that we made a valuable contribution to the basketball teams. We had six boys and two girls on the teams. The girls were Sally Smiley and Mary Beth Govoreau. The boys were Clifford Gosney, John Stippey, Junior Twiehaus, Donald Hoech, Norton Kennedy, and Forrest Mikus.

Our candidate for the F. F. A. Chapter Sweetheart was Sally Smiley and Donald Hoech was the nominee for the F. H. A. King of Hearts.

The Junior-Senior prom, which was held on Saturday evening May 2, featured a "Starlight and Moonglow" theme. The gym was sectioned off to form a patio surrounded by a stone wall on which vines climbed and against which shrubs grew and blossomed. The false ceiling was of deep blue, studded with twinkling stars, and with a full moon casting its beams to furnish light for the dancers. Throughout the garden, tables were placed among the shrubbery. These were decorated with delicately cut crepe paper covers, over which stardust had been sprinkled, and each was lighted by a single taper in a star-shaped holder. Refreshments for the evening were Dew Drops (cookies) and Moonshine (punch). Invitations and favor booklets were in keeping with the theme of the evening. Music was furnished by an orchestra from the Woodland School of Music in St. Louis.

On May 15 the Juniors ended a very successful school year at Wright City High School.





Mrs. Ann  
Stamer,  
Sponsor



Sally  
Smiley,  
President



Norton  
Kennedy,  
V-President



Shirley  
Koelling,  
Secretary



Phyllis  
Cook,  
Treasurer



Claude  
Gosney



Clifford  
Gosney



Mary Beth  
Covoreau



Donald  
Hoech



Carolyn  
Jaspering



Marlene  
Lemke



Forrest  
Mikus



Margarette  
Scheitz



Robert  
Twiehaus



Ray  
Welge





Sophomores



## Sophomore Activities

The Sophomore Class began school last fall with a population of 18. Our officers this year have been Lester Sontag, president; Bonnie Barklage, v-president; Terry Shortal, secretary-treasurer; and Shirley Milan, reporter. George Jaeger and Betty Stamer were members of the student council.

The freshman initiation was held September 23 when the "poor, unworthy freshmen" were rigged in fantastic garbs.

Since that time we have gained two pupils and lost two. Six of our girls have won basketball letters; Betty Stamer, Lois Feix, Bonnie Barklage, Marilyn Hunt, Shirley Milan, and Francis Null.

Miss Ermanell Joslin, our sponsor this year, has been most helpful in her suggestions. We have had two bake sales, both successful.

As this has been such a prosperous year for us, we of the Sophomore Class, hope that the freshmen of this year are as successful and happy when they become sophomores.





Miss Ermanell  
Joslin  
Sponsor



Lester  
Sontag  
President



Bonnie  
Barklage  
V-President



Terry  
Shortal  
Sec.-Treas.



Veva  
Dalton



Lois  
Feix



Connie  
Haller



Marilyn  
Hunt



George  
Jaeger



Shirley  
Milan



Darlene  
Nistendirk



Frances  
Null



Donald  
Oney



Marvel  
Park



Nellie  
Seger

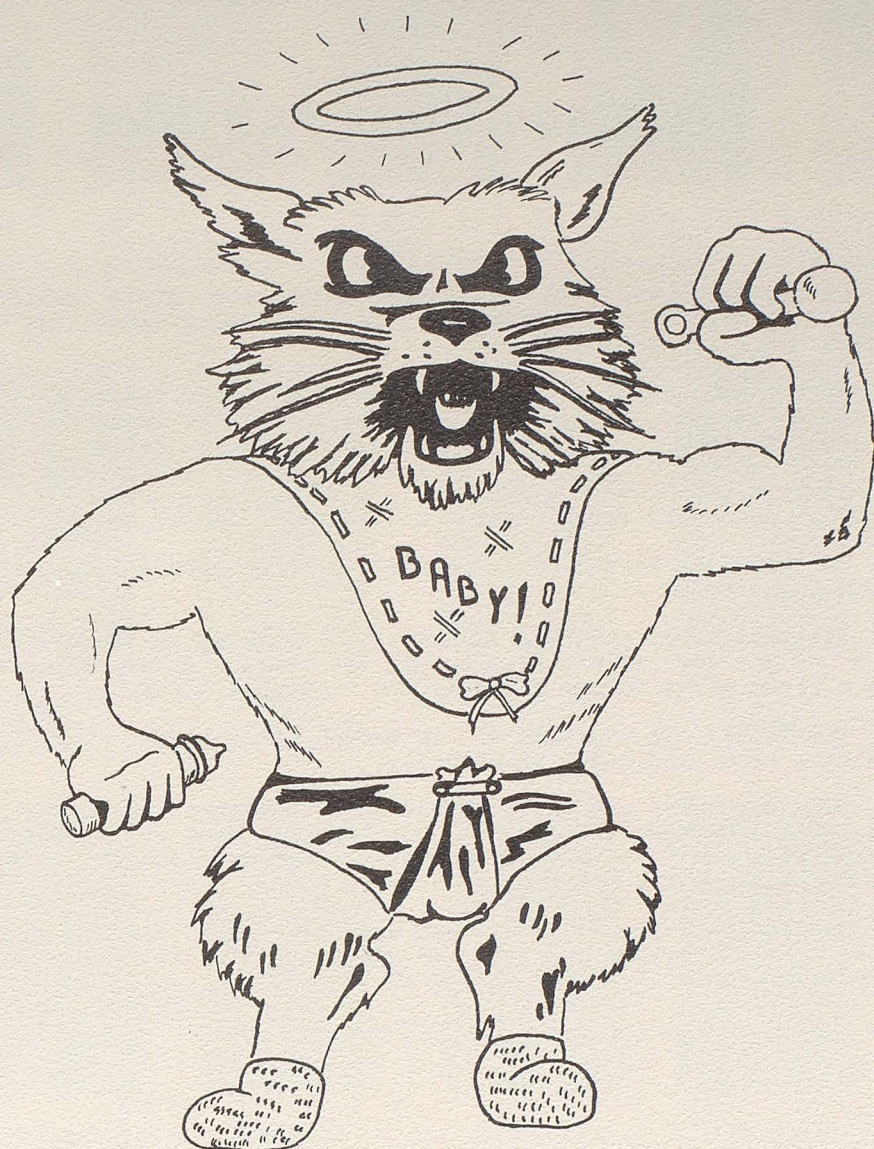


Betty  
Stamer



Lonnie  
Williams





Freshmen



# Freshman Class Activities

On September 2, 1952, seventeen boys and girls entered Wright City High School as Freshmen. After getting acquainted we elected the following officers:

Bobbie Hasekamp . . . . .	President
Paul Godt . . . . .	Vice President
Ann Twiehaus . . . . .	Secretary
Ruth Hoech . . . . .	Treasurer
Georgia Thompson . . . . .	Reporter
Paul Godt-Ruth Hoech . . . . .	Student Council Members

Our sponsor, Miss Stuart, has helped us to make a good start on our high school career.

Initiation Day came shortly after the opening of school. We had a tough day at school, but in the evening it was climaxed with a party given in our honor by the Sophomore class.

Our class is represented in school activities: F. F. A., F. H. A., band, and boys' basketball.

Ruth Hoech was chosen candidate for the Wildcat Queen candidate, while Delores Twiehaus (better known as Ann) was nominated as candidate for F. F. A. Sweetheart. Charles Schnick was the Freshman nominee for the King of Hearts.

During the year we have had one bake sale and two candy sales. Profits were put into the class treasury for the coming years as students of Wright City High School.





Miss Betty  
Stuart,  
Sponsor



Bobbie  
Hasekamp,  
President



Paul  
Godt,  
V-President



Delores  
Twiehaus,  
Secretary



Ruth  
Hoech,  
Treasurer



Geneva  
Barton



Terry  
Govoreau



Freddie  
Flake



Janice  
Harms



Robert  
Lewis



Charles  
Milan



Earl  
Requat



Charles  
Schnick



Melavee  
Schrechengast



Shelton  
Singer



Georgie  
Thompson

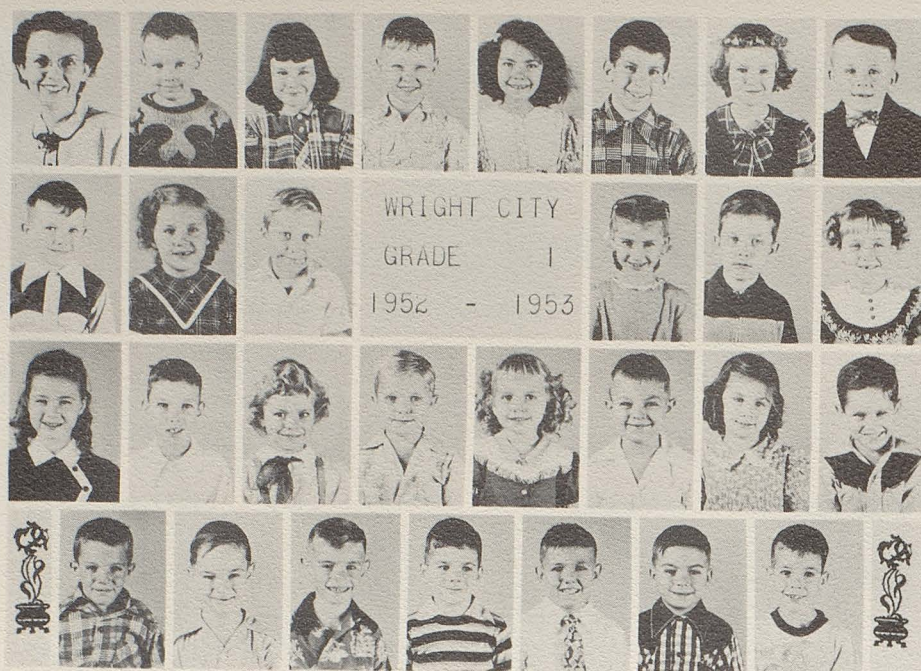


Laverne  
Webbink

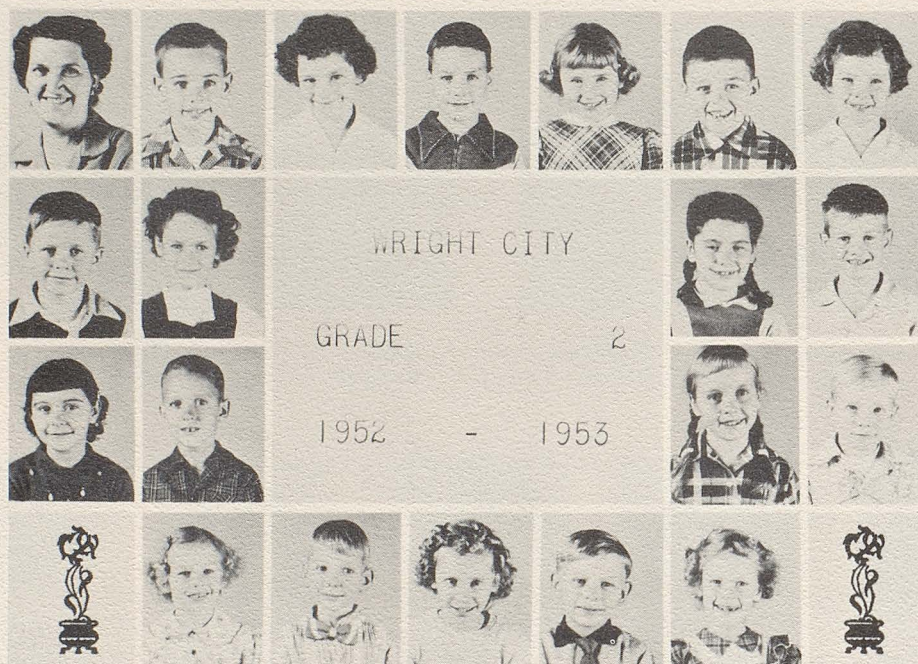


Wendell  
Welge



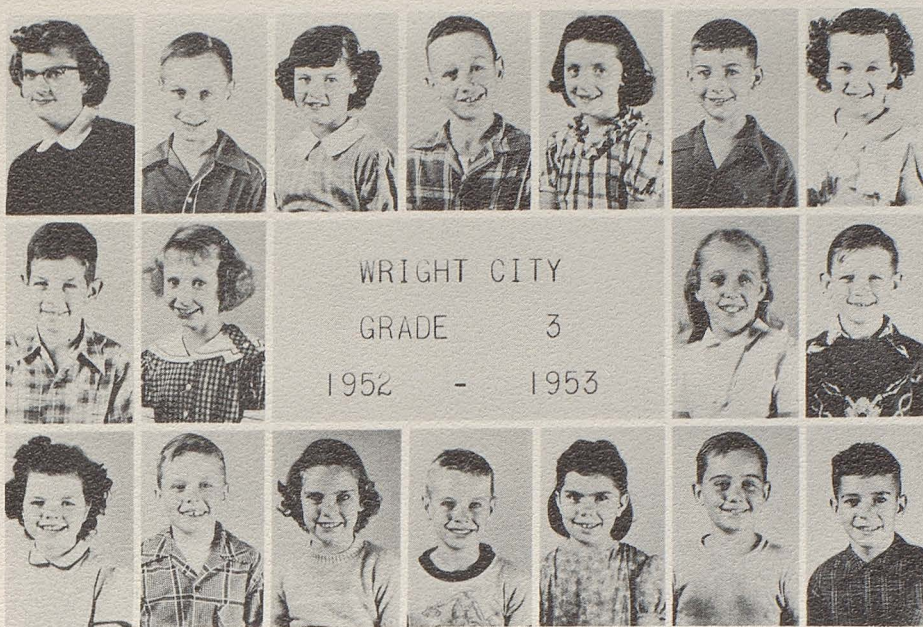


Row 1: Ruby Bebermeyer, Leon Rogers, Patsy Moffat, David Smith, Virginia Copeland, Marshall Whitmire, Jean Esterline, Terry Weiss. Row 2: Buddy Leykamp, Carla Barcus, Leroy Mikus, Mary Lockhart, John Ramsey, Kathy Baker. Row 3: Verona Little, Wesley Jaspering, Sandy Stamer, Leonard Frueh, Marjorie Mygatt, Larry Haller, Marilyn Schindler, John Prior. Row 4: Marvin Wood, Allen Sontag, Kenny Howell, Billy McCoy, Ricky Tremblay, Raymond Boehmer, and Pat Carney.



Row 1: Ida M. Whitthaus, Billy Wood, Charlene Cox, Douglas Pettig, Judy Null, Michael Cavitt, Marlene Cox. Row 2: Harry Prior, Virginia McCoy, Claris Smith, Phillip Milan. Row 3: Bobbie Summerlin, Sidney Buchanan, Cecilia Smiley, Phillip Hunt. Row 4: Irma Abrolat, Richard Fine, Betty Nadler, Kenneth Webbink, Sharon Twiehaus.



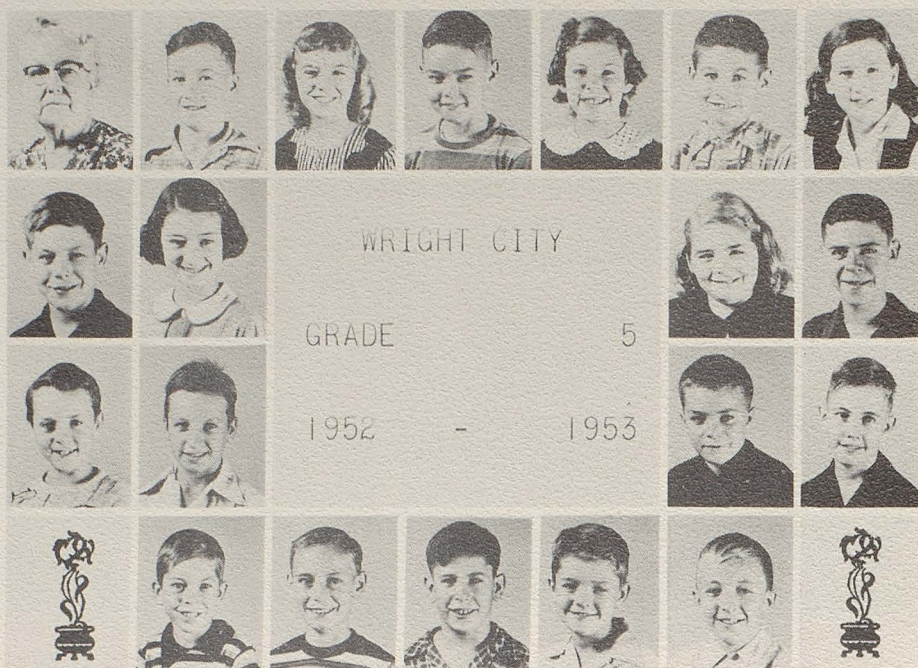


Row 1: Miss Poe, Jerry Raye Pettig, Alice Marie Walker, Jack Milan, Judy Ann Forsee, Thomas Lockhart, Marianne Louise Haller. Row 2: Paul Kendil Bruning, Marjorie Seger, Sandra Black, Earl Douglas Gerdeman. Row 3: Gloria Jean Fry, Gerald Wayne Good, Nina Faye Esterline, William Martin Bockhorst, Alice Bernice Copeland, Roger Dale Lynn, Harold Buchanan.



Row 1: Della V. Thoroughman, Richard Schindler, Charlotte Booker, William Muenz, Valerie Leykamp, Theodore Nadler, Betty Tomek, Jimmy Burris. Row 2: Lonnie Henry, Velma Vahle, Ronald Barton, Opal Paul, Henry Frueh, Brenda Dixon. Row 3: Margaret Klingenburg, Victor Brockfeld, Melva Jean Eversmeyer, Walter Schemmer, Donna Twiehaus, Edward Stuermann, Mary Ann Stamer, Tommy Ray Dixon. Row 4: Billy Lynn, Sherry Howell, Patrick Schellert, Jay Bruning.



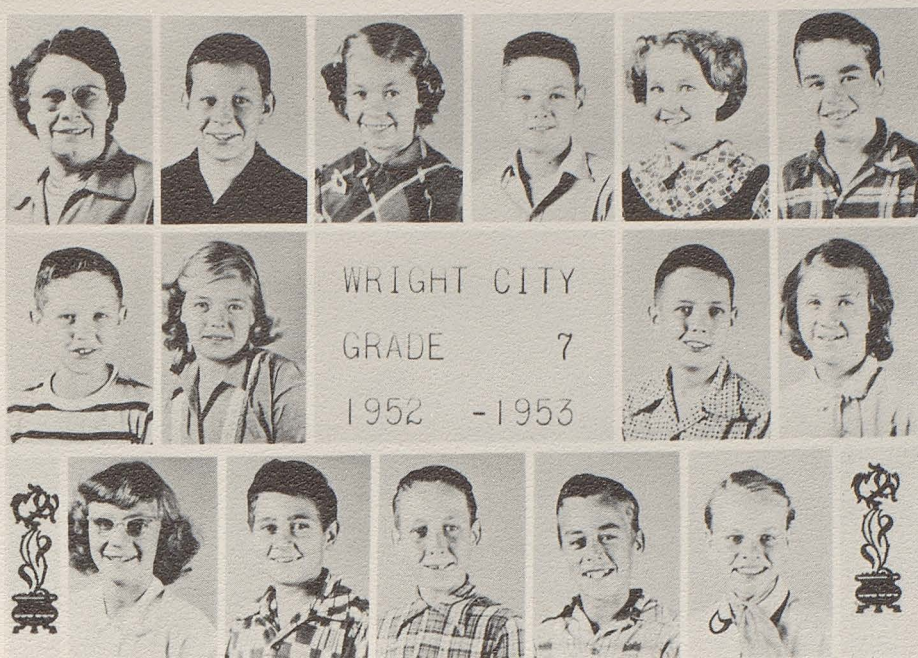


Row 1: Mrs. Lola Tiedemann, Donald Milan, Marilyn Boehmer, Cary Torbett, Carol Linnenbringer, Gerald Schindler, Bonnie Cox. Row 2: Jimmy Bueneman, Melba Klausmeier, Darlene Fine, John Dobsch. Row 3: Richard Phegley, Frank Frueh, Roger Hunt, Butch (Corwin) Ruge. Row 4: Wayne Schemmer, Donald Eversmayer, Jerry Taylor, Dennis Marborough, Ronald Pauk.



Row 1: Edw. Wilbur Cox, Goldie Black, Bobbie Barton, Emily Hoech, Dale Haller, Rose Schnick, Joe Korte, Barbara Tomek. Row 2: Sandy Tate, Jackie Lee, Virginia Fenner, Elmer Vahle, Elaine Welge, Eddie Hollenbeck. Row 3: Dean Wyatt, Arline Paul, Ronnie Nieburg, Ann Strathman, Kenneth Marten, Patricia Marborough, Bill Moffat, Irene Dobbs. Row 4: Raymond Phegley, Joseph Hughes, Wayne Esterline, Herbert Strube, Herbert Lockhart, Fred Skaggs, David Govoreau.



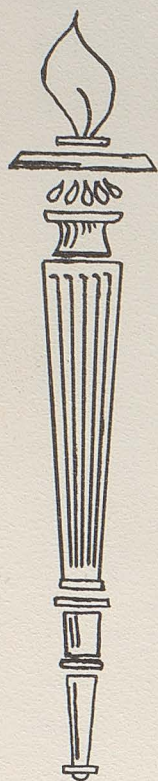


Row 1: Mrs. Ellouise Hasekamp, Neal Ordelheide, Mary Jane Klausmeier, Arthur Spards, Norma Booher, Robert Wyatt. Row 2: David Hoech, Leora Uthe, Murrill Wohler, Marilyn Reich. Row 3: Cecillia Skaggs, Paul Dillon, Frankie Cox, Richard Montgomery, Loretta Marten.

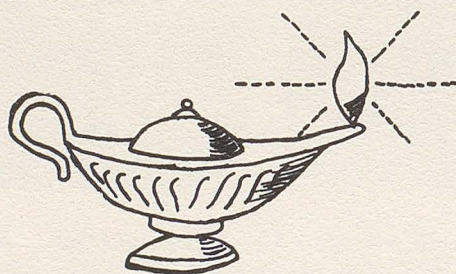


Row 1: James Huester, Adele Eversmeyer, Fred Harms, Paula Dee Stamer, Francis Taylor, Melba Oney, Ted Skaggs. Row 2: Alice Tremblay, Harold Dean Booher, Tommy Null, Joan Kempfer, Row 3: Eldon Ambuehl, Louise Barton, Gloria Fenner, James Johnson. Row 4: Allan Hunt, Lavella Boehmer, Norman Leesman, Annabel Walker, Florence Mikus.





# Activities





**Year**

**Book**



**Queen**



**Maids of Honor**



## Band

The Wright City High School Band under the direction of Mr. James Fortune has had a very successful year. The band gave one concert in the fall and another in the spring. The fall concert featured a trumpet trio by Lester Sontag, Paul Godt, and Terry Shortal; and a tuba solo by Harvey Hughes.

The spring concert proved to be an evening of fine entertainment. The band played several snappy marches and solos were played by Lester Sontag, Donnie Hoech, and Lois Feix.

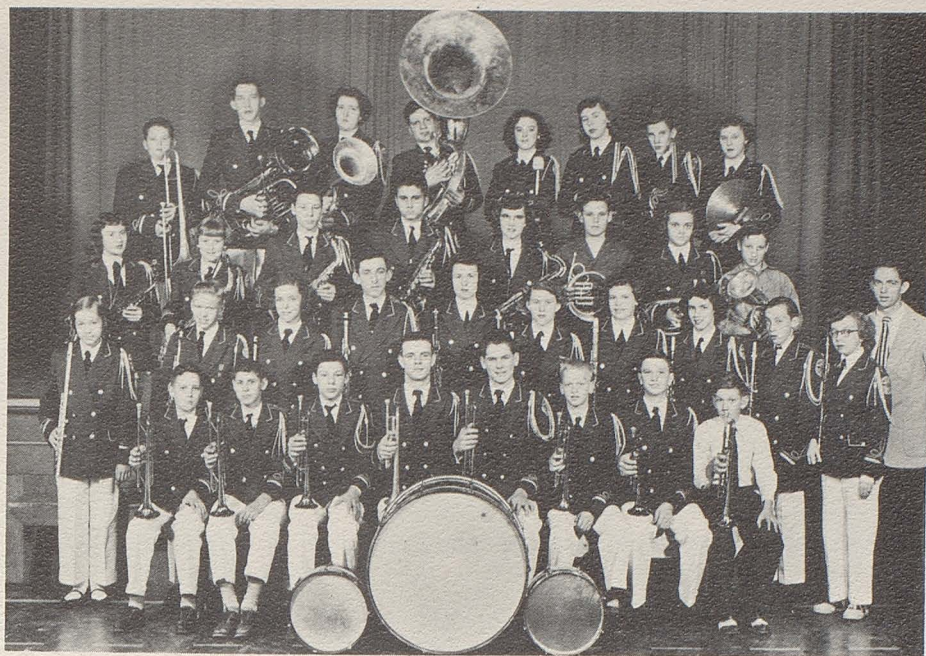
The band participated in the Wentzville Music Festival and entered the music contest at Kirksville where they received a II rating.

During this year the band has been enlarged considerably and it is looking forward to even better years in the future.

## Junior Band

At the beginning of this school year in early September, 32 little grade school boys and girls marched happily into the music room all set to start playing their musical instruments. Most of them knew very little about music but were anxious to start playing. Today, about 24 of these beginners are well on the road to becoming the future musicians of the Wright City Public School.





Row 1: Murrill Wohler, Eldon Ambuehl, Clifford Gosney, Lester Sontag, Terry Shortal, Paul Godt, Bobby Hasekamp, Norman Leesman. Row 2: Mary Jane Klausmeier, Clifford Garret, Joan Kempfer, Roland Niemann, Shirley Groeper, Lois Feix, Adele Eversmeyer, Janet Walker, Earl Requat, Shirley Ryker, Mr. Fortune, Director. Row 3: Frances Null, Patricia Marbough, Claude Gosney, Fred Flake, Ruth Hoech, Freddie Harms, Paula Stamer, Frank Frueh. Row 4: Tommy Null, Donald Hoech, Bonnie Barklage, Harvey Hughes, Veva Dalton, Mary Ellen Diven, Joe Korte, Nellie Seger.



Eddie Hollenbeck, Joseph Hughes, Cecillia Skaggs, Sharon Harms, Sandy Tate, Ann Strathman, Norma Bocher, Harold Bocher Gary Torbett, Mr. Fortune, Ronnie Nieburg, David Hoech, John Dobsh, Herbert Lockhart, Wayne Schemmer, Dean Wyatt, Roger Hunt, Jimmy Bueneman, Jackie Lee.



## F. F. A.

The Wright City FFA chapter started the year with a barn-warming. Roland Niemann acted as master of ceremonies; Shirley Groeper was chosen Queen and Raymond Welge was the big winner of the corn shucking contest.

A Hampshire Swine Sale was sponsored in which \$2593.50 worth of registered Hampshire Hogs were sold. This was high ranking chapter in the United States in Hampshire Swine Production Registry, and was awarded a gold plaque and certificate of merit for this achievement. During national FFA week a window display was made of show winnings.

Three teams were entered in the judging contests at Gray Summit and five teams at the Kirksville contest. In this contest Bobby Hasekamp, Ray Welge, Ginatha Driemeyer, and Roland Niemann received I rating. The dairy judging team and the shop team also received I ratings. The shop team won the right to enter state competition by ranking among the 5 highest schools in the contest.

Two members attended the state convention as delegates. During this convention, Ginatha Driemeyer and Donald Bote were advanced to the degree of State Farmer.

The chapter finished the school year with a parent and son banquet held in the Agriculture Shop.

## F. H. A.

The Future Homemakers of America have had another interesting and profitable year. The officers for the year were:

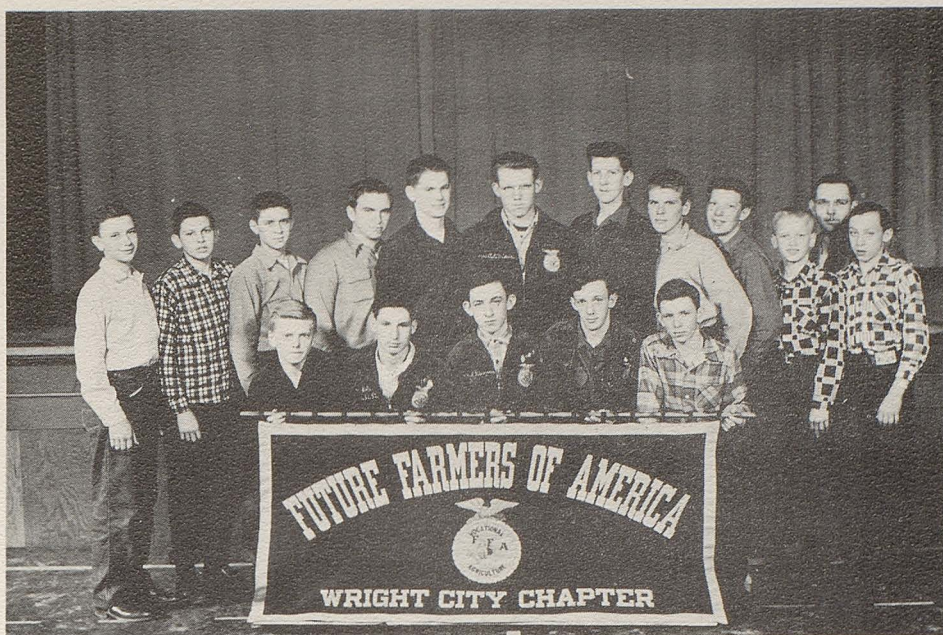
President	Shirley Groeper
Vice-President	Mary Beth Govoreau
Secretary-Treasurer	Shirley Ryker
Reporter and Historian	Shirley Koelling
Songleader and Parliamentarian	Lois Feix
Chapter Mothers	Mrs. Stamer - Mrs. Franz
F. H. A. Advisor	Miss Ermanell Joslin

On October 29 a group attended the sub-district meeting at Elsberry.

The big event of the year was the Valentines Day "King of Hearts" party. A candidate for king was chosen from each class: Charles Schnick, Freshman; Lester Sontag, Sophomore; Donald Hoech Junior; Harvey Hughes, Senior. The winner was Lester Sontag. Dancing and various relays completed the entertainment.

Lois Feix and Francis Null entered the contest at Kirksville for second year Home Economics and received a I rating. Shirley Koelling and Janet Walker received a II rating for third year Home Economics.





Top Row: Bobbie Hasekamp, Wendell Welge, Wayne Schroer, George Jaeger, Terry Shortal, Forrest Mikus, Junior Twiehaus, Conrad Haller, Ray Welge, Paul Godt, Mr. Burris, sponsor, Earl Requat. Front Row: Lonnie Williams, Donald Bote, Roland Niemann, Frank Driemeyer, Marvin Schubert.



Top Row: Ruth Hoech, Janice Harms, Mary Ellen Diven, Betty Stamer, Bonnie Barklage, Rose Marie Ordelheide, Shirley Milan Ann Twiehaus, Marilyn Hughes, Veva Dalton, Second Row: Geneva Barton, Melavee Schreckengast, Nellie Seger, Phyllis Cook, Marvel Park, Marilyn Hunt, Darlene Nistendirk, Janet Walker, Mary Shelton, Sally Smiley, Francis Null. Front Row: Miss Joslin, sponsor, Shirley Koelling, Mary Beth Govoreau, Shirley Groeper, Lois Feix, Shirley Ryker.



# Mixed Chorus

The mixed chorus participated in two concerts given by the music department this year. One was at Christmas and the other in the spring.

Its members made up the chorus which gave the minstrel on March 5. The cast of nine jokesters included Ronnie Harpster, Earl Requat, Norton Kennedy, George Jaeger, Terry Shortal, Connie Haller, Harvey Hughes, Paul Godt and Charles Schnick.

The mixed chorus played a major part in the Wentzville Music Festival in April.

During this year many happy hours have been spent the eighth period in a blending of voices throughout the halls of Wright City High.

# Newspaper Staff

The Wright City High School newspaper, the WILDCAT TALES, has been published monthly during the school year. With Ronnie Harpster as editor, it has provided the students with news, laughs, and all the things that are necessary for a good school paper. The staff of the WILDCAT TALES includes:

Editor . . . . .	Ronnie Harpster
Assistant Editor . . . . .	Lester Sontag
Business Managers . . . . .	Harvey Hughes Ruth Hoech
Art Editor . . . . .	Sally Smiley
Gossip . . . . .	Shirley Groeper
Humor . . . . .	Marilyn Hughes Mary Govoreau
Music Reporter . . . . .	Donald Hoech
Sports Reporter . . . . .	Bert Singer Norton Kennedy
F. H. A. Reporter . . . . .	Shirley Koelling
F. F. A. Reporter . . . . .	Wayne Schroer
Class Reporters:	
Senior . . . . .	Janet Walker
Junior . . . . .	Ray Welge
Sophomore . . . . .	Shirley Milan
Freshman . . . . .	Georgia Thompson
Typists . . . . .	Marilyn Hughes Mary Ellen Diven
Sponsor . . . . .	Miss Stuart



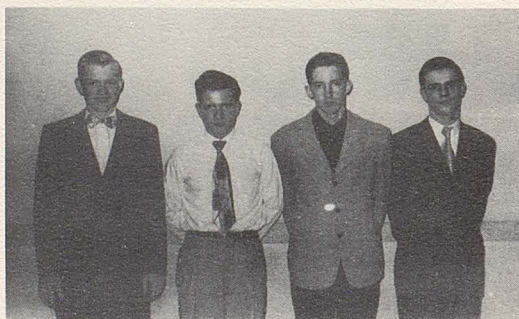
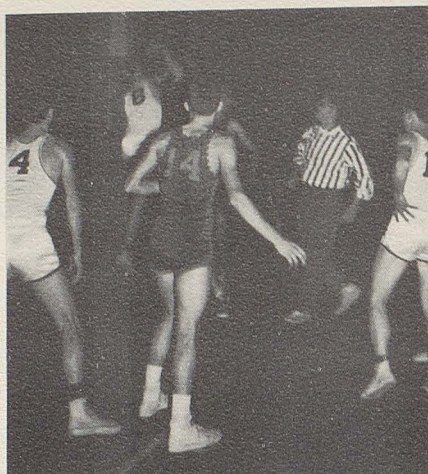


Seated: Rose Marie Ordelheide, Mary Beth Govoreau, Ruth Hoech, Sally Smiley, Bert Singer, Marilyn Hughes, and Shirley Koelling. Standing: Janet Walker, Ray Welge, Harvey Hughes, Donald Hoech, Norton Kennedy, Ronnie Harpster, Lester Sontag, Wayne Schroer, and Miss Betty Stuart, Sponsor.



Row 1: Geneva Barton, Sally Smiley, Shirley Koelling, Marvel Park, Marilyn Hughes, Mary Ellen Diven, Shirley Milan, Lois Feix, Frances Null, and Mr. James Fortune, Director. Row 2: Melavee Schreckengast, Mary Shelton, Veva Dalton, Janice Harms, Shirley Groeper, Ruth Hoech, Mary Beth Govoreau, Nellie Seger, Ann Twiehaus, Bert Singer, and Shirley Ryker. Row 3: Phyllis Cook, Harvey Hughes, Ronnie Harpster, Donnie Hoech, Robert Twiehaus, Forrest Mikus, Terry Shortal, Lester Sontag, Charles Milan, and Janet Walker.

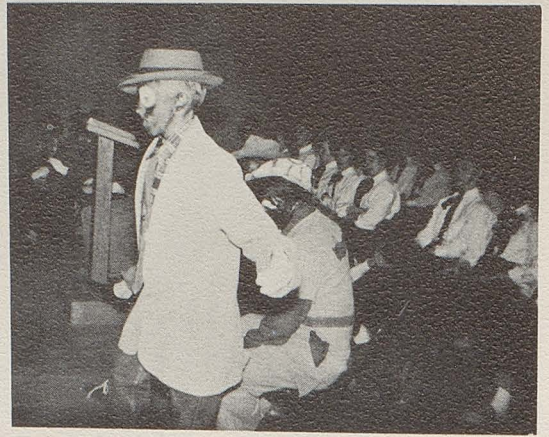








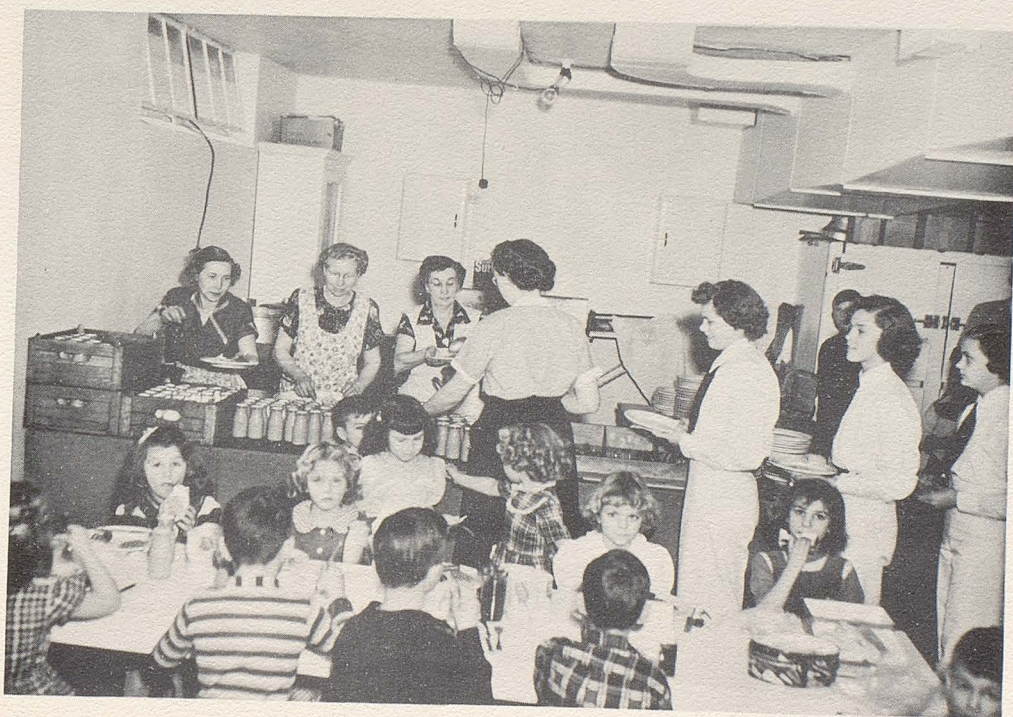






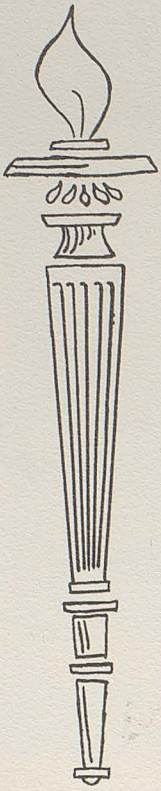


Row 1: Cecilia Smiley, Charlene Cox, Sandy Stamer, Bobbie Summerlin. Row 2: Alice Walker, Virginia McCoy, Mary Ann Stamer, Marilyn Hughes, Gloria Jean Fry, Marlene Cox, Sharon Twiehaus.

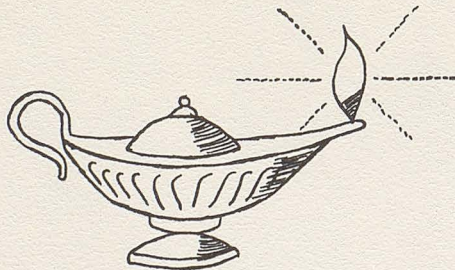


Mrs. Bote, Mrs. Feix, and Mrs. Franz in the lunch room serving members of the grade school.





# Athletics





## Cheer Leaders

One cheerleader was elected from each of the four classes. Ruth Hoech was the one chosen from the Freshman class, Veva Dalton from the Sophomore class, Phyllis Cook from the Junior class and Janet Walker from the Senior class. These four girls elected an alternate, Shirley Koelling.

The cheerleaders made appearances at the basketball games to add some school spirit to the events.

After the basketball season had ended, the student body elected Janet Walker to be the captain. Janet received a letter award for this honor.



Janet Walker, Phyllis Cook, Ruth Hoech, Veva Dalton.



# Girls Basketball Team

Basketball is over for another year, and looking back over it we think it was a pretty successful season. Success doesn't always mean winning, because we didn't always win. We learned how to grin and bear it when we lost and to keep right in there fighting. Most of all, we enjoyed it. We had a rip-roarin' good old time.

The reason we had such a wonderful season is because of our coach, "Jumping Joe" Booker. He put a lot of time, patience, and work into making this season so wonderful for us. We truly appreciate all he has done.

## A Team Girls Who Lettered

Bonnie Barklage, Mary Ellen Diven, Lois Feix, Shirley Groeper Marilyn Hunt, Shirley Milan, Bert Singer, Sally Smiley, Betty Stamer. B Team Letter: Francis Null.

# Basketball Team

In the 1952-53 season the boys won 12 games and lost 15. The team improved over last year's season. The boys were entered in 3 tournaments--Silex (4th place), Bellflower (no place), and Wentzville (1st place). The high point man was Capt. Donald Hoech with 285 points. John Lewis won high average per game with 14.

The team will lose 3 lettermen this year: W. Schroer, R. Harpster, and J. Lewis, all who are valuable players.

W.C.H. is looking forward to the next season with the nucleus of the B squad back in school. With our added experience the prospects for the next season's team are bright.

## A Team Lettermen

Donnie Hoech, Captain, Bob Lewis, John Lewis, Norton Kennedy, Forrest Mikus, Wayne Schroer, and Paul Godt, Manager.

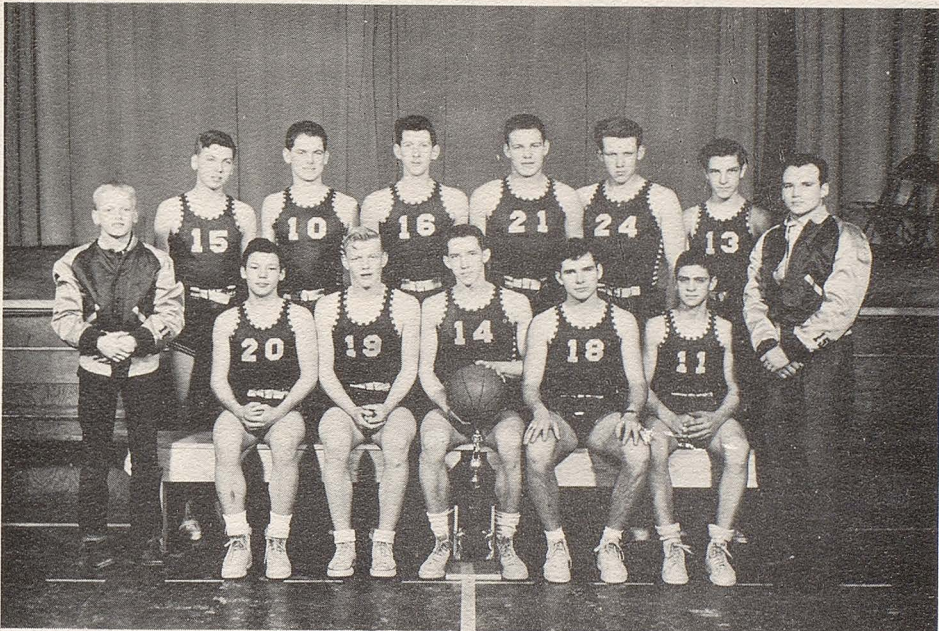
## B Team Lettermen

Charles Schnick, Ronnie Harpster, and Junior Twiehaus.





Seated: Francis Null, Lois Feix, Shirley Milan, Bertha Singer, Marilyn Hunt, Sally Smiley. Standing: Paul Godt, Mary Ellen Diven, Shirley Groeper, Betty Stamer, Bonnie Barklage, and Mr. Boeker.



Seated: Clifford Gosney, Charles Schnick, Donald Hoech, Ronnie Harpster, Wayne Schroer. Standing: Paul Godt, John Stippey, Terry Shortal, Junior Twiehaus, Norton Kennedy, Forrest Mikus, Shelton Singer and Mr. Boeker.



# Scores

	<u>W. C.</u>	<u>OPP.</u>
O'Fallon . . . . .	13	18
Silex . . . . .	10	02
New Florence . . . .	20	19
Silex . . . . .	10	49
Winfield . . . . .	9	31
New Haven . . . . .	21	8
Winfield . . . . .	26	44
Augusta . . . . .	33	43
Wentzville . . . . .	15	29
Bellflower . . . . .	23	66
New Florence . . . .	33	31

	<u>W. C.</u>	<u>OPP.</u>
Winfield . . . . .	17	43
Silex . . . . .	17	41
Winfield . . . . .	33	45
Augusta . . . . .	36	44
Home Town . . . . .	34	24
New Florence . . . .	19	27
O'Fallon . . . . .	29	24
Bellflower . . . . .	19	68
Wentzville "B" . . .	41	26
Wentzville "A" . . .	18	30
Wentzville "A" . . .	28	41

	<u>W. C.</u>	<u>OPP.</u>
O'Fallon . . . . .	46	24
Silex . . . . .	40	60
New Florence . . . .	59	12
R-III (T) . . . . .	35	17
Winfield (T) . . . .	45	51
Bellflower (T) . . .	33	36
Wellsville . . . . .	39	58
New Haven . . . . .	52	47
Winfield . . . . .	32	43
Augusta . . . . .	38	42
Wentzville . . . . .	60	29
Bellflower (T) . . .	33	46
Bellflower (T) . . .	38	62
St. George . . . . .	41	45

	<u>W. C.</u>	<u>OPP.</u>
Silex . . . . .	55	56
Winfield . . . . .	36	42
Augusta . . . . .	31	41
St. George . . . . .	50	41
New Florence . . . .	61	21
O'Fallon . . . . .	76	28
Winfield (T) . . . .	52	48
Augusta (T) . . . . .	34	31
Pacific (T) . . . . .	63	50
Wellsville . . . . .	47	66
Wentzville . . . . .	64	41
New Haven . . . . .	44	48
Eolia (Sub-R) . . . .	38	56

# Soft Ball

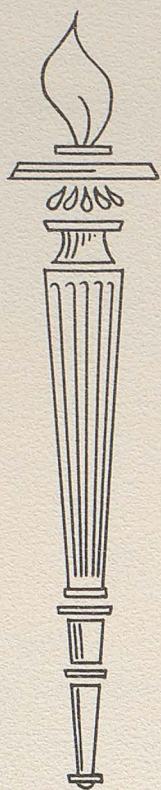
	<u>W. C.</u>	<u>OPP.</u>
New Florence . . . .	17	9
Washington . . . . .	13	32
Silex . . . . .	14	13

	<u>W. C.</u>	<u>OPP.</u>
O'Fallon . . . . .	4	12
Augusta . . . . .	5	12
New Florence . . . .	16	9

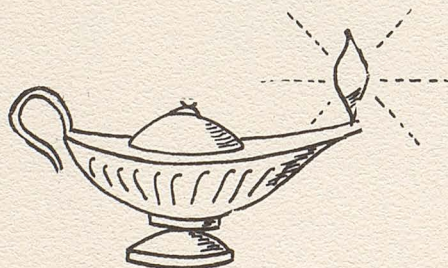


# Autographs





# Advertising





CONGRATULATIONS

SENIORS

**NIEBURG MOTOR COMANY**

CHEVROLET and OLDSMOBILE

Phone 104

WRIGHT CITY, MISSOURI



COME ONE! COME ALL!

Friendliest place in town

Bring your Family and all your Friends

Television--Pool Table

## FARMER'S INN

WRIGHT CITY, MISSOURI



COMPLIMENTS OF

**RITE CUT SOLE CORPORATION**

WRIGHT CITY, MISSOURI



COMPLIMENTS OF

**VOGT'S COMMUNITY DAIRY**

Pasteurized and Homogenized Milk and Cream

Deliveries to Wright City and Warrenton

Phone 45



# ECONOMY SUPER MARKET

Call at your A - G Store for Quality Groceries

Fresh or Frozen Fruits and Vegetables

Home Killed Meat

Phone 134

Wright City, Missouri

---

# FARMERS ELEVATOR COMPANY

Dealers in Feed

Grain & Livestock Hauling

Phone 39  
Wright City, Missouri

Phone 6724  
Foristell, Missouri



# FARMERS AND MERCHANTS BANK

WRIGHT CITY, MISSOURI

Oldest Bank in Warren County

Member Federal Deposit Insurance Corporation

Phone 77

---

Compliments of

## HENKE'S CLEANERS

210 East Main Street

Phone 395

Warrenton, Missouri

Deliveries to Wright City

Tuesdays and Fridays to:

Paul Martin's

Stamers Store

Economy Super Market



Compliments of

## BIG BOY'S RESTAURANT

Wright City, Missouri

Phone 73

---

Compliments of

## BINKLEY MANUFACTURING COMPANY

Machined and Fabricated Metal Products

Phone 48

Warrenton, Missouri



# BUENEMAN'S HARDWARE

G. E. Appliances

Coal - Hardware - Purina Chows

Sanitation - Livestock Trucking

Phone 105-N

Wright City, Missouri

---

Dine in our

RESTAURANT

Private Dining Room

# DAVIS RESTURANT AND SERVICE STATION

24 hour Service

Phone 36

Wright City, Missouri



# MARGARET'S BEAUTY SHOP

Complete Beauty Service and Cosmetics

9 A. M. to 6 P. M.

Evenings by Appointment

Phone 78

615 Clara Avenue

Warrenton, Missouri

---

Compliments of

## NIEBURG FURNITURE AND UNDERTAKING COMPANY

FUNERAL DIRECTORS AND AMBULANCE SERVICE

AMBULANCE EQUIPPED WITH OXYGEN

AIR CONDITIONED CHAPEL

WRIGHT CITY, MISSOURI

Phone 89 or 11

Our Service Available in St. Louis

Rosedale 0500



# SHELL SERVICE STATION

Lubrication - Car Washing

Tire Repair

SHELL PRODUCTS

Prompt Courteous Service

"Go to Shell"

Phone 172

Wright City, Missouri

---

COMPLIMENTS OF

## WRIGHT CITY LUMBER COMPANY

WRIGHT CITY, MISSOURI



## ART AND DOT'S CAFE

Plate Lunches

Coffee

Sandwiches

Sodas

Cupcakes

Pies

Doughnuts

"Try Some of Dot's Home Cooked Meals"

Phone 108

Wright City, Missouri

---

Compliments of

## BEBERMEYER'S

Your Friendly Rexall Store

Phone 20

Warrenton, Missouri

---

## VICTOR E. BROCKFELD, SR.

Paper Hanging, Painting and Plastering

Repair Work

Phone 135-11

Red Gables Farm

Route 2

Wright City

---

## CARPS DEPARTMENT STORE

"The Store Where You Can Do Better"

Phone 409

Warrenton, Missouri



Compliments of

## CITY MEAT MARKET

Select Meats - Vegetables - Groceries

R. H. Struchtemeyer

Phone 83

Wright City, Missouri

---

## COFFEE CUP CAFE

Good Coffee and Steaks

Warrenton, Missouri

---

## GROEPER OIL COMPANY

Gasoline - Fuel Oil - Motor Oil - Greases

Delivery Service

K. W. Groeper

Phone 131

Wright City, Missouri

---

Compliments of

## ISENMANN BROTHERS GARAGE

Day--185

Phones

Night--66 & 241

Warrenton, Missouri



## JACK'S HARDWARE

Hardware - Garden Tractors  
Sporting Goods - Homelite Chain Saws  
Bottle Gas - Merry Tillers  
Everything in Hardware

Phone 28

Warrenton, Missouri

---

## LITTLE VILLAGE

66 Service Station and Cafe  
Gasoline - Oil - Propane  
24 hour Service

U. S. Highway 40

Wright City, Missouri

---

## MARTIN BARBER SHOP

Home of the close shaves and stylish haircuts

Phone 133

Wright City, Missouri

---

## NORMA'S BEAUTY SALON

Cold Waves

Machineless

Revlon Cosmetics

Residence 177

Phone

Shop 138

Wright City, Missouri



# NYAL STORE

Drugs--Drugs Sundries--Stationery

Paint--Oils--Wallpaper

Tobacco--Candy

Fountain Service

Phone 54

Wright City, Missouri

---

# A STAMER COMPANY

General Merchandise

"We give Eagle Stamps"

Phone 17

Wright City, Missouri

---

# SYMES BROTHERS BLACKSMITH

Welding

General Blacksmithing

Phone 76

Wright City, Missouri

---

# TOMEK'S VARIETY STORE

Notions - Shoes - Dry Goods

"Where Quality Exceeds Price"

Phone 19

Wright City, Missouri



# TRI-COUNTY ELECTRIC AND PLUMBING COMPANY

Distributor of Cooking and Heating Gas

Harold A. Buchanan, Proprietor

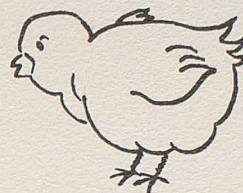
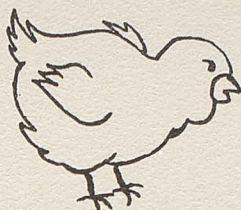
Phones  
Business 139--Residence 152

Wright City, Missouri

---

## TRI- COUNTY HATCHERY

Mel's Quality Chicks



The Hatchery Quality Built

M. F. Saatman, Owner and Manager

Phone 111

Wright City, Missouri

---

Compliments of

## WARRENTON BAKERY

Warrenton, Missouri

---

## WARRENTON SUPPLY COMANY

Distributors of Leading Brands

Kohler Plumbing Fixtures

All types Heating Equipment - M. H. Controls

Warm Air Furnaces - Air Conditioning

Automatic Water Heaters - Truscon Steel Windows

Phelan Paints - Plastic Wall Tile - Tile Flooring

M. D. Ragland, Manager

Warrenton, Missouri



Compliments of

## WRIGHT CITY CLEANERS

Pick-up and Delivery Service

Wright City, Missouri

---

## WRIGHT CITY MANUFACTURING COMPANY

"Show It and Sell It - Hide It and Keep It"

"Wright Built Fixtures"

Phone 142

Wright City, Missouri

---

Compliments of

## WULFF'S FLORIST SHOP

Flowers for all occasions

FTD Wire Service

Phone 261

Warrenton, Missouri

---

### BOOSTERS

Mr. F. C. Small  
Mr. August Marten  
Mr. A. R. Cleveland  
Mr. John Haich  
Mrs. G. C. Schmitt  
Mrs. Dorothy Schnick  
Shirley Groeper  
Mr. Tom Davis III  
Mrs. Charlene Chaney  
Mr. & Mrs. Edward Gerdeman  
Mr. & Mrs. Andrew Ordelheide  
Mr. & Mrs. Julius Twiehaus  
Warrenton Shoe Store

Mr. & Mrs. Charles Marten  
Mr. Erwin Groeper  
Marilyn Hughes  
Mrs. Emma Groeper  
Jeanette Groeper  
Larry Schaper  
Slim Bowman  
Vince Alberternst  
Mr. Walter Pauk  
Sally Witthaus  
Alice Becker  
Mr. Bruce Groeper  
Mr. Earl Schmitt



